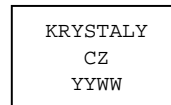
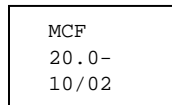
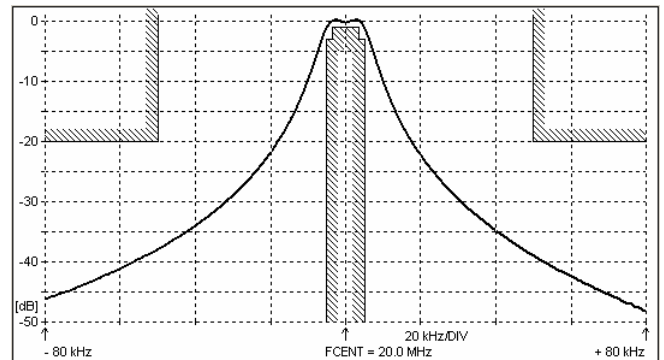
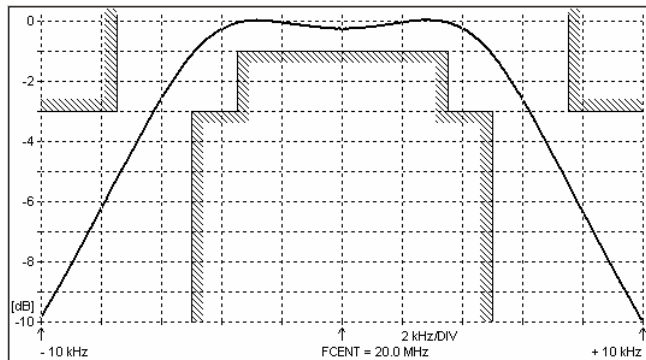
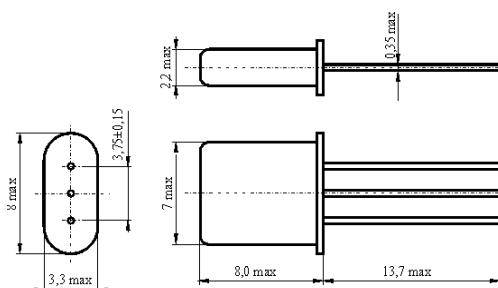
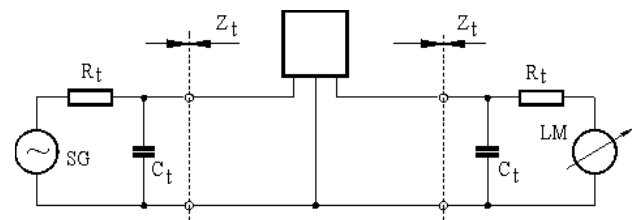


**SPECIFICATION FOR CRYSTAL FILTER**
MCF 20.0-10/02Number: 91 894
Drawing: 61 9570**1. Electric values**

1.0 Number of poles :	2
1.1 Nominal centre frequency f_{nom} :	20.0 MHz
1.2 Bandwidth between 3 dB frequencies :	$\geq \pm 5.0$ kHz
1.3 Ripple at $f_{nom} \pm 3.5$ kHz :	≤ 1.0 dB
1.4 Insertion loss :	≤ 2.0 dB
1.5 Stop band: $f_{nom} \pm 7.5$ kHz :	≥ 3 dB
$f_{nom} \pm 50$ kHz :	≥ 20 dB
1.6 Terminating impedance (input and output) :	500 Ohm // 2.0 pF
1.7 Operating temperature range :	-20°C až +70°C
1.8 Case :	UM-1
1.9 Marking on the case :	YY = year WW = week

**2. Characteristics MCF 20.0-10/02****Dimensions [mm]**
Case UM-1**Measurement Circuit**

edited | 15.06.2011 | P. Seidl