



**SPECIFICATION FOR CRYSTAL FILTER**  
**MCF 21.4-12/04**

**Number: 91 834**  
**Drawing: 61 9574**

**1. Electric values**

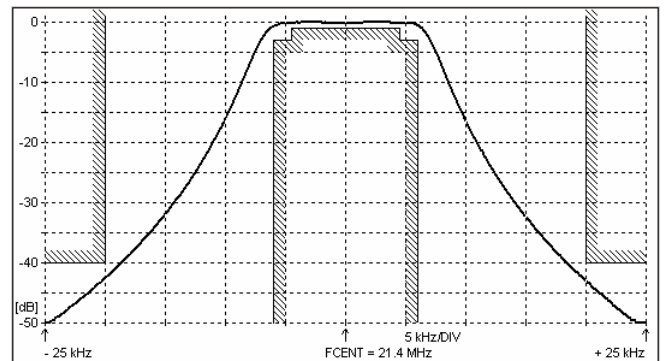
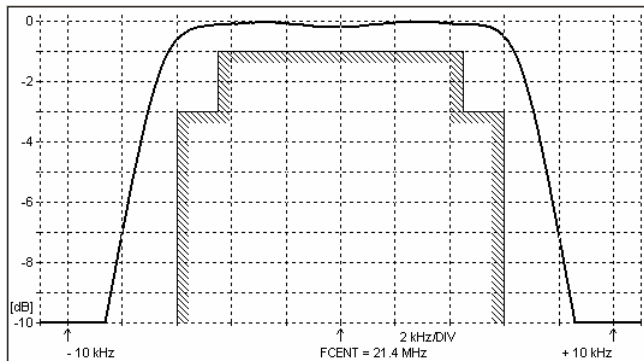
- 1.0 Number of poles : 4
- 1.1 Nominal centre frequency  $f_{nom}$  : 21.4 MHz
- 1.2 Bandwidth between 3 dB frequencies :  $\geq \pm 6.0$  kHz
- 1.3 Ripple at  $f_{nom} \pm 4.5$  kHz :  $\leq 1.0$  dB
- 1.4 Insertion loss :  $\leq 2.0$  dB
- 1.5 Stop band:  $f_{nom} \pm 20$  kHz :  $\geq 40$  dB  
 $f_{nom} + 50 \dots + 1000$  kHz :  $\geq 65$  dB  
 $f_{nom} - 100 \dots - 1000$  kHz :  $\geq 80$  dB
- 1.6 Spurious :  $\geq 40$  dB
- 1.7 Terminating impedance ( input and output ) : 1200 Ohm // 2.5 pF  
 Coupling capacitance : 9.0 pF
- 1.8 Operating temperature range : -25°C až +70°C
- 1.9 Case : 2 x UM-1
- 1.10 Marking on the case :

MCF
21.4-
12/04

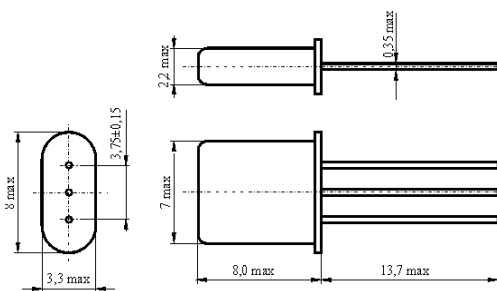
KRYSTALY
CZ
YYWW

YY = year  
WW = week

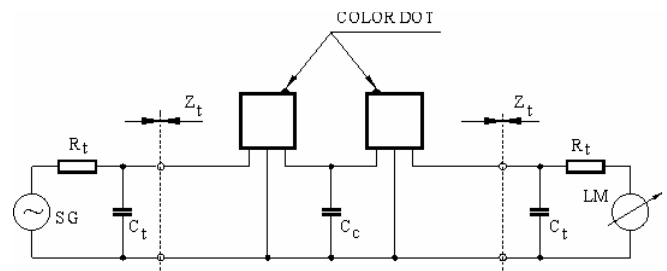
**2. Characteristics MCF 21.4-12/04**



**Dimensions [mm]**  
**Case UM-1**



**Measurement Circuit**



edited	01.04.2011	P. Seidl
--------	------------	----------