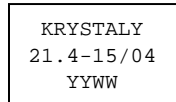
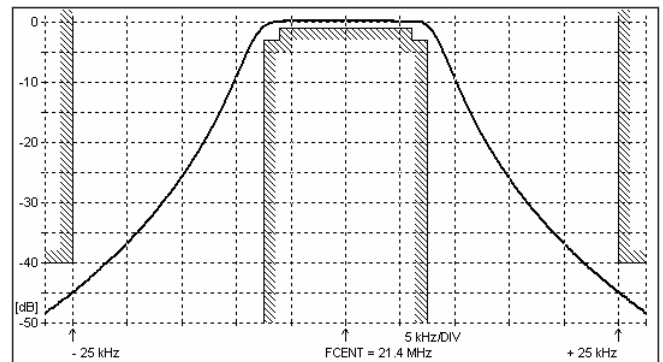
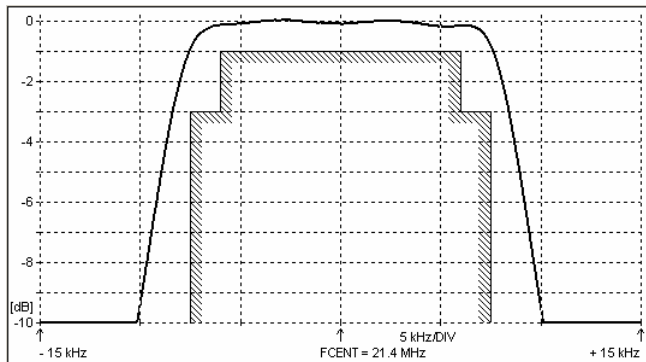
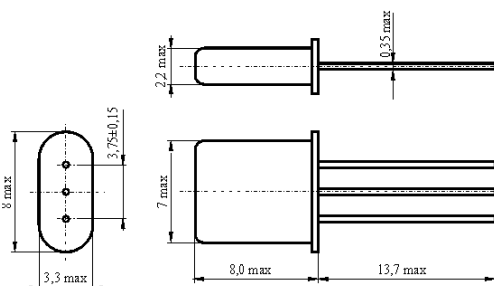
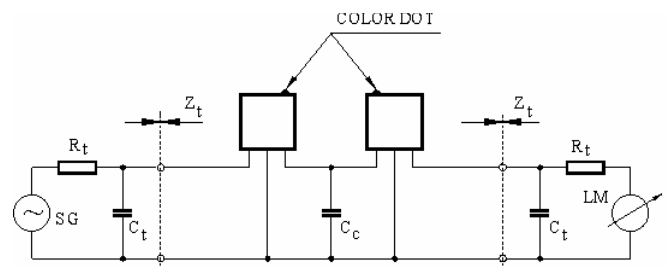


**SPECIFICATION FOR CRYSTAL FILTER**
MCF 21.4-15/04Number: 91 845
Drawing: 61 9574**1. Electric values**

1.0 Number of poles :	4
1.1 Nominal centre frequency f_{nom} :	21.4 MHz
1.2 Bandwidth between 3 dB frequencies :	$\geq \pm 7.5$ kHz
1.3 Ripple at $f_{nom} \pm 6.0$ kHz :	≤ 1.0 dB
1.4 Insertion loss :	≤ 2.5 dB
1.5 Stop band $f_{nom} \pm 25$ kHz :	≥ 40 dB
1.6 Terminating impedance (input and output) :	1600 Ohm // 2.0 pF
Coupling capacitance :	7.0 pF
1.7 Operating temperature range :	-25°C až +70°C
1.8 Case :	2 x UM-1
1.9 Marking on the case :	YY = year WW = week

**2. Characteristics MCF 21.4-15/04****Dimensions [mm]**
Case UM-1**Measurement Circuit**

edited | 28.02.2011 | P. Seidl