



SPECIFICATION FOR CRYSTAL FILTER MCF 21.4-25/08

Number: 92 411
Drawing: 61 9578

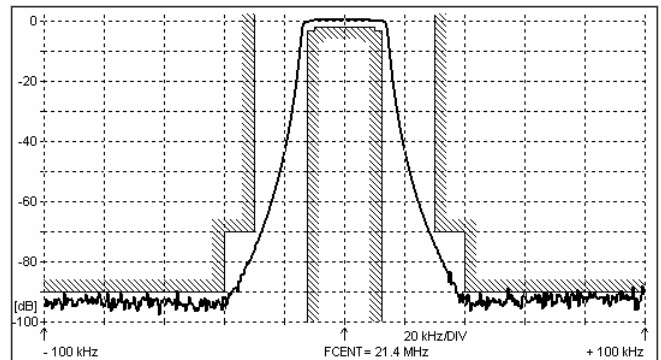
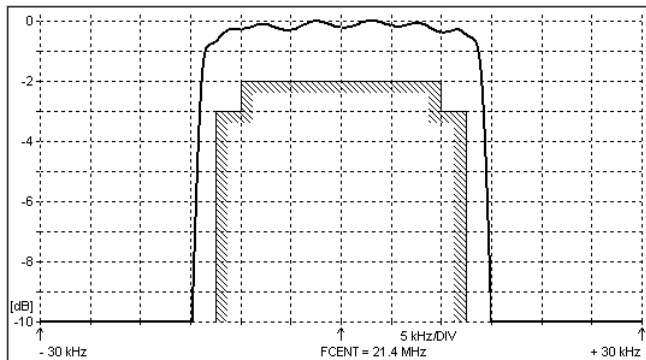
1. Electric values

- 1.0 Number of poles : 8
- 1.1 Nominal centre frequency f_{nom} : 21.4 MHz
- 1.2 Nominal bandwidth between 3 dB frequencies : $\geq \pm 12.5$ kHz
- 1.3 Ripple at $f_{nom} \pm 10.0$ kHz : ≤ 2.0 dB
- 1.4 Insertion loss : ≤ 3.5 dB
- 1.5 Stop band $f_{nom} \pm 30$ kHz : ≥ 70 dB
- $f_{nom} \pm 40$ kHz ± 500 kHz : ≥ 90 dB (except spurious)
- 1.6 Spurious responses : ≥ 60 dB
- 1.7 Level linearity at levels from -40 to 0 dBm at 21.4 MHz : ≤ 0.15 dB
- 1.8 Terminating impedance (input and output) : 50 Ohm // 0 pF
- 1.9 Operating temperature range : -40°C to +85°C
- 1.10 Case : KF 13 (25.1 x 14.1 x 10.0 mm)
- 1.11 Marking on the case :

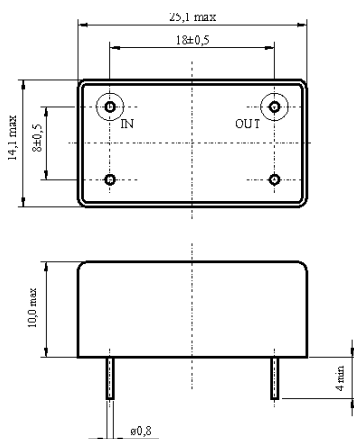
KRYSTALY HK
YYWW
21.4-25/08

YY = year
WW = week

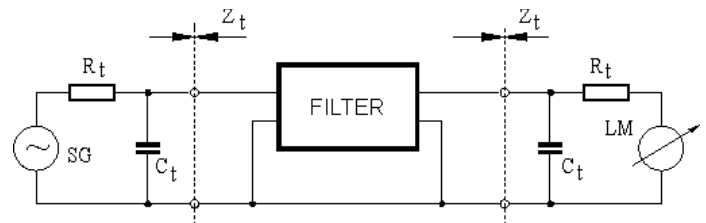
2. Characteristics MCF 21.4-25/08



Dimensions [mm] Case KF 13



Measurement Circuit



edited 24.01.2017 P. Seidl