



SPECIFICATION FOR CRYSTAL FILTER MCF 25.0-7.0/11

Number: 92 508
Drawing: 61 9578

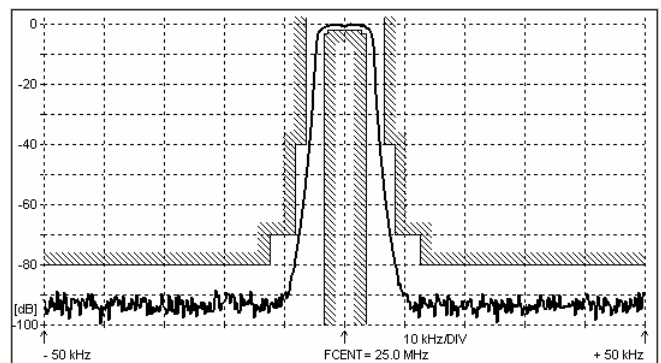
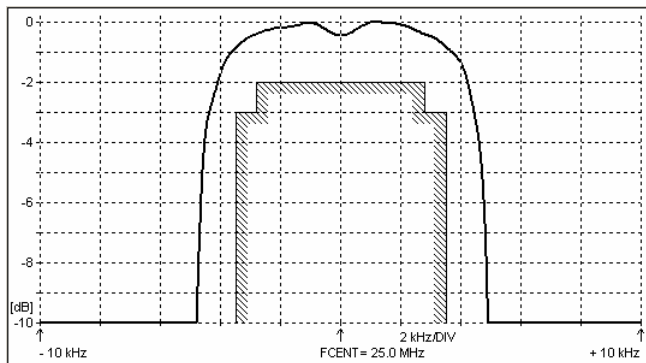
1. Electric values

- 1.0 Number of poles : 10
- 1.1 Nominal centre frequency f_{nom} : 25.0 MHz
- 1.2 Bandwidth between 3 dB frequencies : $\geq \pm 3.5$ kHz
- 1.3 Ripple at $f_{nom} \pm 2.8$ kHz : ≤ 2.0 dB
- 1.4 Insertion loss : ≤ 6.0 dB
- 1.5 Stop band $f_{nom} \pm 6.5$ kHz : ≥ 40 dB
- $f_{nom} \pm 8.3$ kHz : ≥ 70 dB
- $f_{nom} \pm 12.5 \dots \pm 910$ kHz : ≥ 80 dB
- 1.6 Terminating impedance (input and output) : 3500 Ohm // 2.0 pF
- 1.7 Operating temperature range : -55°C to +70°C
- 1.8 Case : KF 13 (25.1 x 14.1 x 10.0 mm)
- 1.9 Marking on the case :

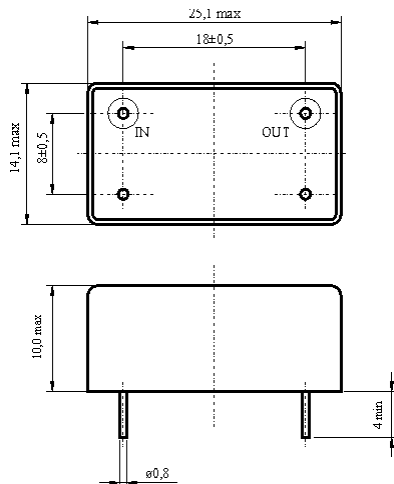
KRYSTALY HK
YYWW
25.0-7.0/11

YY = year
WW = week

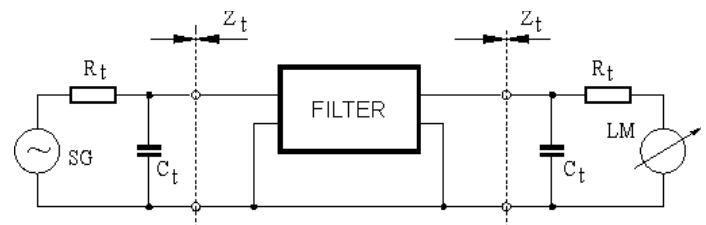
2. Characteristics MCF 25.0-7.0/11



Dimensions [mm] Case KF 13



Measurement Circuit



edited 18.04.2018 P. Seidl