

SPECIFICATION FOR CRYSTAL FILTER MCF 35.25-50/16

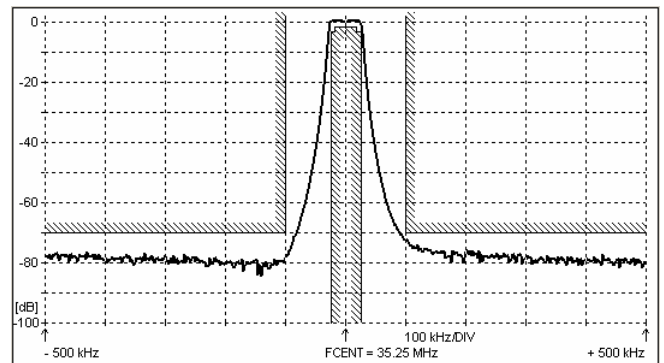
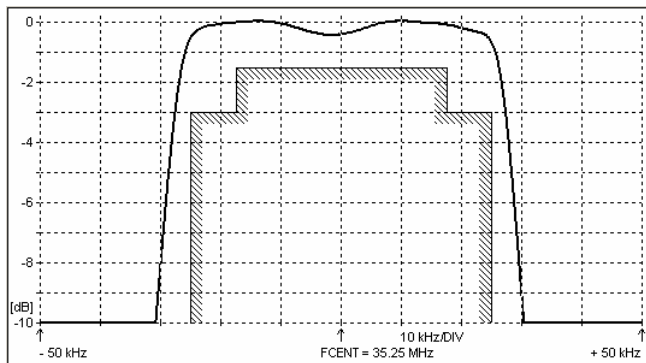
Number: 92 015
Drawing: 63 9568

1. Electric values

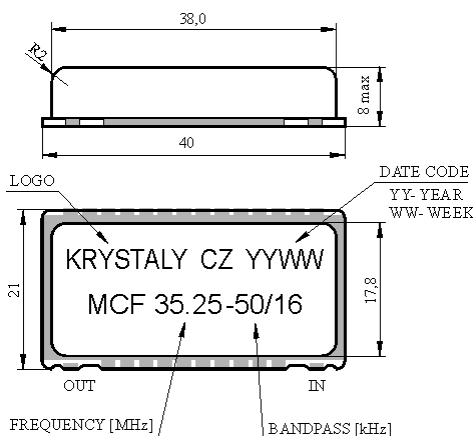
- 1.0 Number of poles : 6
- 1.1 Nominal centre frequency f_{nom} : 35.25 MHz
- 1.2 Centre frequency f_c : 35.25 MHz \pm 2.0 kHz
- 1.3 Bandwidth between 3 dB frequencies : $\geq \pm$ 25 kHz
- 1.4 Ripple at $f_{nom} \pm 17.5$ kHz : \leq 1.5 dB
- 1.5 Insertion loss : \leq 5.0 dB
- 1.6 Stop band: $f_{nom} \pm 100$ kHz : \geq 70 dB
 $f_{nom} \pm 910$ kHz : \geq 70 dB
- 1.7 Spurious : \geq 60 dB
- 1.8 Terminating impedance (input and output) : 50 Ohm // 0 pF
- 1.9 Operating temperature range : -20°C to +70°C
- 1.10 Case : KF 17.5 SMD (40 x 21 x 8 mm)
- 1.11 Marking on the case : YY = year
WW = week

KRYSTALY CZ YYWW
MCF 35.25-50/16

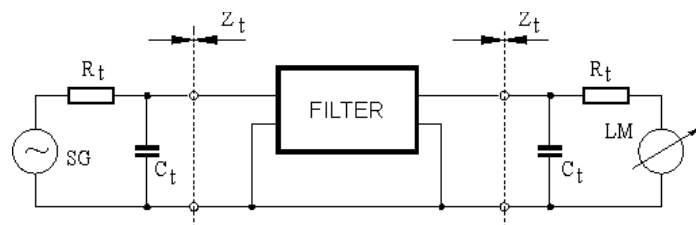
2. Characteristics MCF 35.25-50/16



Dimensions [mm] Case KF-17



Measurement Circuit



edited	08.09.2011	P. Seidl
--------	------------	----------