

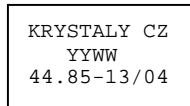


SPECIFICATION FOR CRYSTAL FILTER MCF 44.85-13/04

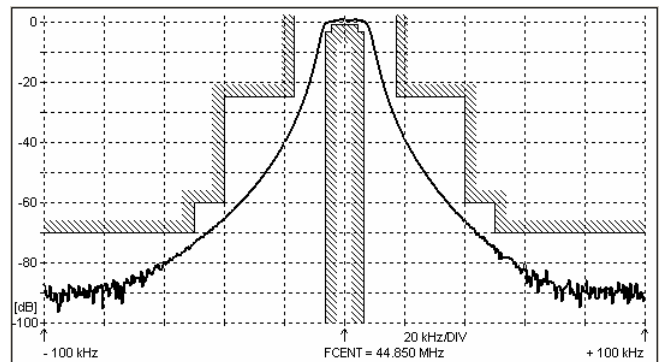
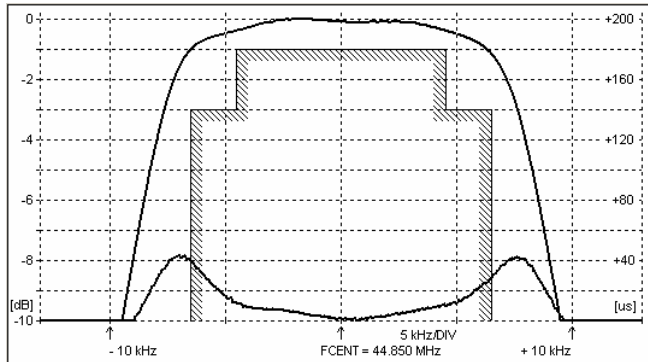
Number: 92 246
Drawing: 61 9578

1. Electric values

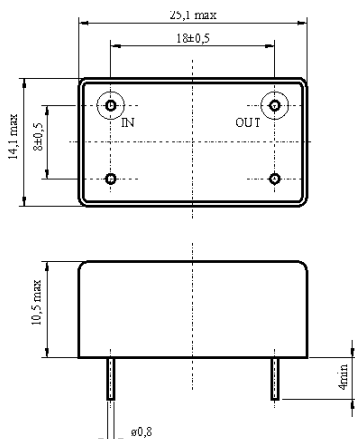
1.0 Number of poles :	4
1.1 Nominal centre frequency f_{nom} :	44.850 MHz
1.2 Bandwidth between 3 dB frequencies :	$\geq \pm 6.5$ kHz
1.3 Ripple at $f_{nom} \pm 4.5$ kHz :	≤ 1.0 dB
1.4 Insertion loss :	≤ 5.0 dB
1.5 Stop band $f_{nom} \pm 17$ kHz :	≥ 25 dB
$f_{nom} \pm 40$ kHz :	≥ 60 dB
$f_{nom} \pm 50$ kHz :	≥ 70 dB
$f_{nom} \pm (100 \pm 5)$ kHz :	≥ 70 dB
$f_{nom} \pm (900 \pm 5)$ kHz :	≥ 80 dB
1.6 Outband IM for $f_{nom} \pm 50 / \pm 100$ kHz and $P_{in} = -10$ dBm :	≥ 90 dB
1.7 Group delay distortion in the range $f_{nom} \pm 5.5$ kHz :	≤ 40 μ s
1.8 Terminating impedance (input and output) :	50 Ohm // 0 pF
1.9 Operating temperature range :	-20°C to +70°C
1.10 Case :	KF 13 (25.1 x 14.1 x 10.5 mm)
1.11 Marking on the case :	YY = year, WW = week (or according to wish of customer)



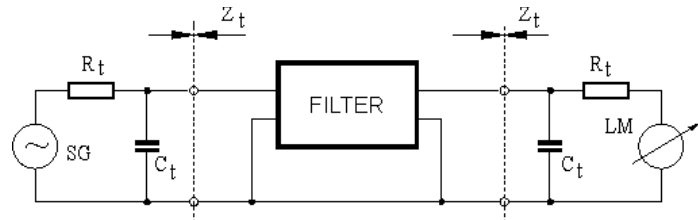
2. Characteristics MCF 44.85-13/04



Dimensions [mm] Case KF 13



Measurement Circuit



edited 18.05.2012 P. Seidl