

**SPECIFICATION FOR CRYSTAL FILTER**  
**MCF 45.0-12BS1**

**Number: 91 906**  
**Drawing: 62 9529**

**1. Electric values**

- 1.0 Number of poles : 4
- 1.1 Nominal centre frequency  $f_{nom}$  : 45.0 MHz
- 1.2 Bandwidth between 3 dB frequencies :  $\geq \pm 6.0$  kHz
- 1.3 Ripple at  $f_{nom} \pm 4.0$  kHz :  $\leq 1.0$  dB
- 1.4 Insertion loss :  $\leq 3.0$  dB
- 1.5 Stop band  $f_{nom} \pm 20$  kHz :  $\geq 30$  dB
- $f_{nom} \pm 27$  kHz :  $\geq 45$  dB
- $f_{nom} \pm 910$  kHz :  $\geq 80$  dB
- 1.6 Spurious responses :  $\geq 40$  dB
- 1.7 Terminating impedance ( input and output ) : 500 Ohm // 4.0 pF
- Coupling capacitance : 12 pF
- 1.8 Operating temperature range : -25°C to +70°C
- 1.9 Case : 2 x UM-5/SMD

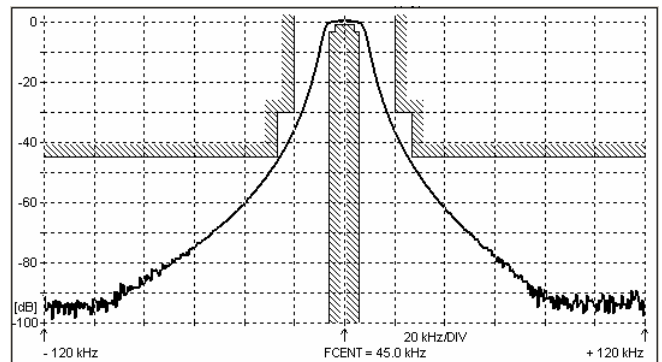
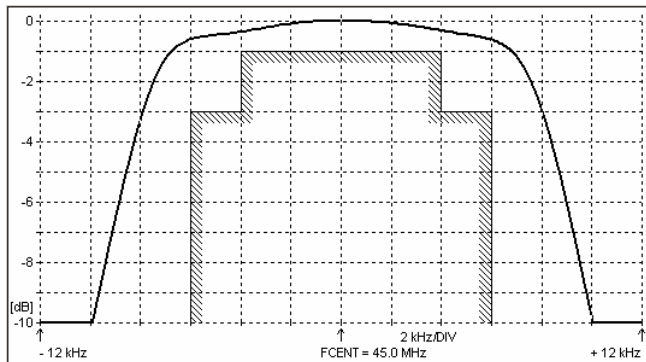
1.10 Marking on the case :

MCF
45.0-
12BS1

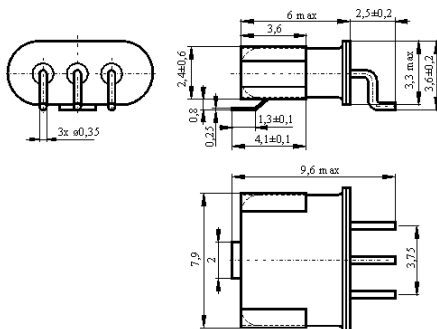
KRYSTALY
CZ
YYWW

YY = year  
WW = week

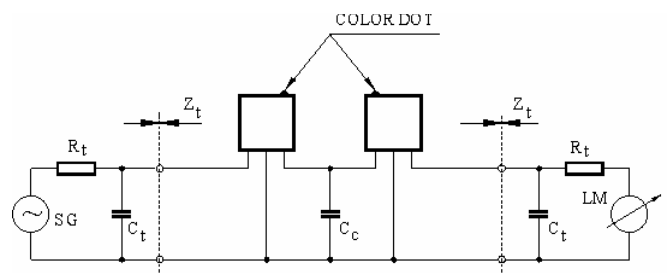
**2. Characteristics MCF 45.0-12BS1**



**Dimensions [mm]**  
**Case UM-5/SMD**



**Measurement Circuit**



edited	06.02.2012	P. Seidl
--------	------------	----------