

SPECIFICATION FOR CRYSTAL FILTER MCF 45.0-30/08

Number: 91 929
Drawing: 61 9578

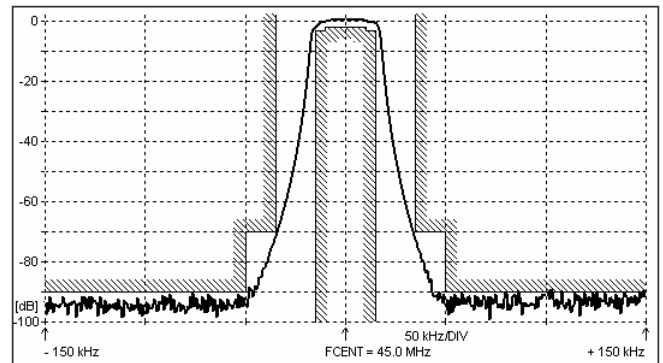
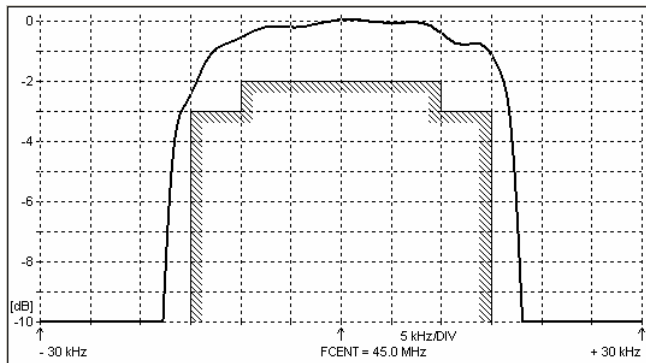
1. Electric values

- 1.0 Number of poles : 8
- 1.1 Nominal centre frequency f_{nom} : 45.0 MHz
- 1.2 Bandwidth between 3 dB frequencies : $\geq \pm 15$ kHz
- 1.3 Ripple at $f_{nom} \pm 10.0$ kHz : ≤ 2.0 dB
- 1.4 Insertion loss : ≤ 3.5 dB
- 1.5 Stop band $f_{nom} \pm 35$ kHz : ≥ 70 dB
- $f_{nom} \pm 50 \dots \pm 500$ kHz : ≥ 90 dB
- 1.6 Spurious responses : ≥ 60 dB
- 1.7 Terminating impedance (input and output) : 470 Ohm // 15 pF
- 1.8 Operating temperature range : -10°C až +55°C
- 1.9 Case : KF 13 (25.1 x 14.1 x 10.5 mm)
- 1.10 Marking on the case :

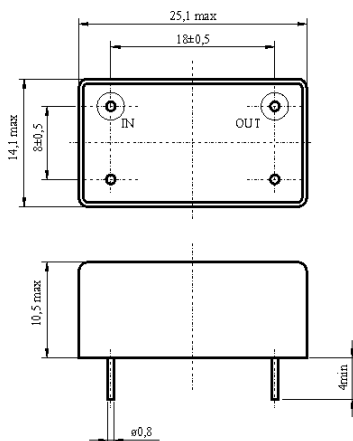
KRYSTALY CZ
YYWW
45.0-30/08

YY = year
WW = week

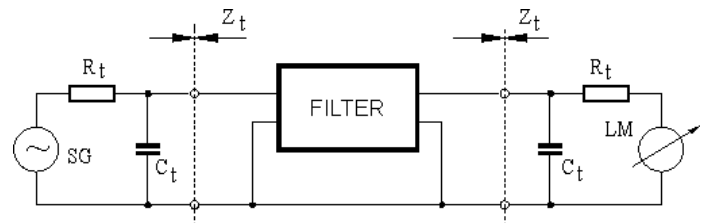
2. Characteristics MCF 45.0-30/08



Dimensions [mm] Case KF 13



Measurement Circuit



edited | 22.07.2011 | P. Seidl