



SPECIFICATION FOR CRYSTAL FILTER MCF 70.0-50/06

Number: 92 265
Drawing: 61 9578

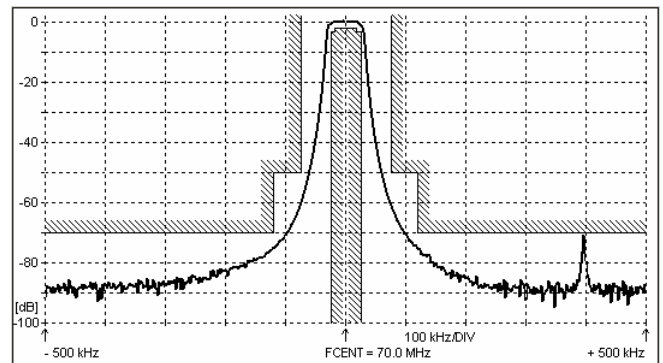
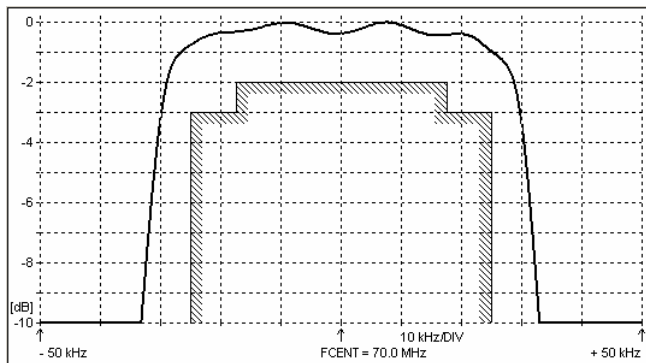
1. Electric values

- 1.0 Number of poles : 6 (fundamental mode)
- 1.1 Nominal centre frequency f_{nom} : 70.0 MHz
- 1.2 Bandwidth between 3 dB frequencies : $\geq \pm 25$ kHz
- 1.3 Ripple at $f_{nom} \pm 17.5$ kHz : ≤ 2.0 dB
- 1.4 Insertion loss : ≤ 5.0 dB
- 1.5 Stop band $f_{nom} \pm 75$ kHz : ≥ 50 dB
 $f_{nom} \pm 120$ kHz : ≥ 70 dB
- 1.6 Alternate attenuation : ≥ 80 dB (except spurious)
- 1.7 Spurious responses : ≥ 50 dB
- 1.8 Terminating impedance (input and output) : 50 Ohm // 0 pF
- 1.9 Operating temperature range : -40°C to +85°C
- 1.10 Case : KF 13 (25.1 x 14.1 x 10.5 mm)
- 1.11 Marking on the case :

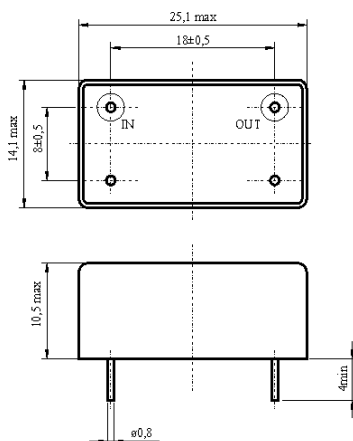
KRYSTALY CZ
YYWW
70.0-50/06

YY = year
WW = week

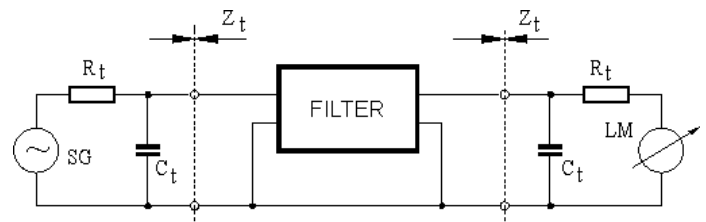
2. Characteristics MCF 70.0-50/06



Dimensions [mm] Case KF 13



Measurement Circuit



edited	06.12.2012	P. Seidl
--------	------------	----------