

Front-end crystal filters

KF 1xx.xxx-25/A4

142 MHz to 190 MHz

Number: 99 018

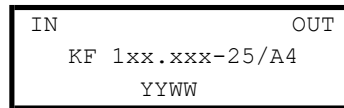
Drawing: 71 0094

1. Electric values

ROHS-Compliant Product

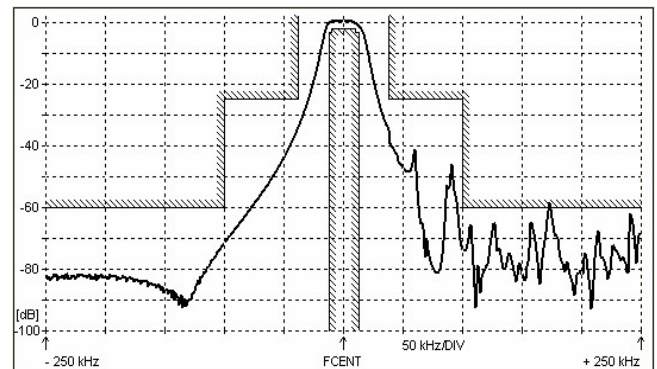
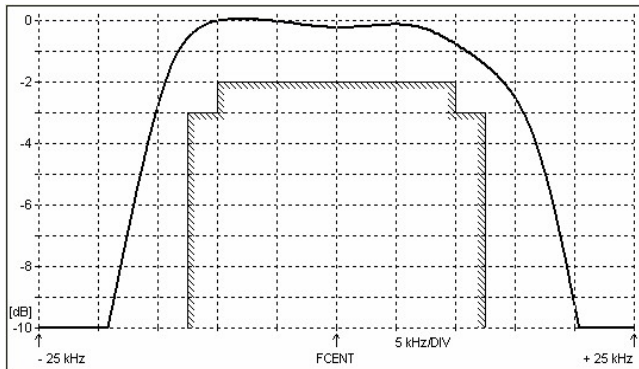
- 1.0 Number of poles: 4
- 1.1 Nominal centre frequency f<sub>nom</sub>: 142 000 ... 190 000 kHz ( 5 overtone )
- 1.2 Bandwidth between 3 dB frequencies: >± 12,500 kHz
- 1.3 Ripple ( f<sub>nom</sub> ± 10,0 kHz): < 2,0 dB
- 1.4 Insertion loss: < 7,0 dB
- 1.5 Stop band: f<sub>nom</sub> ± 38,0 kHz: ≥ 25 dB  
f<sub>nom</sub> ± 100 kHz ... ± 5 MHz : ≥ 60 dB
- 1.6 Spurious response: ≥ 20 dB
- 1.7 Terminating impedance: 50 Ohm // 0 pF
- 1.8 Maximum input power level ( working / non-damaged ): -10 / +10 dBm  
+30 dBm for 100 ms
- 1.9 Operating temperature range: -20°C ... + 70°C  
Operable temperature range: -20°C ... + 80°C  
Storage temperature range: -40°C ... + 90°C
- 1.10 Case: KA 4 (with N female) 61.1 x 26.8 x 27.3 mm

1.11 Marking on the case :

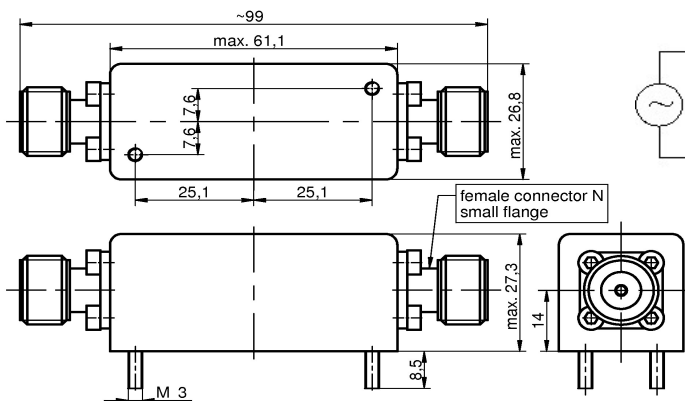


YY - year  
WW – week ( or customer's marking )

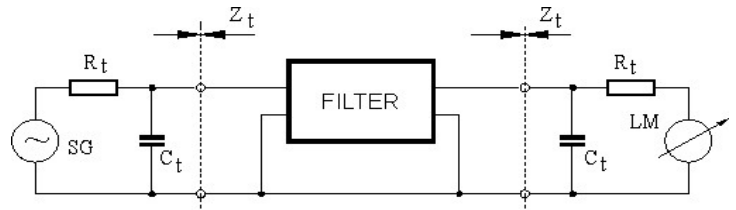
2. Characteristics



Dimensions KA4 [mm]



Measurement Circuit



edited | 11.10.2021 | P.Jungling