

Front-end crystal filters  
KF 100.0-100/A3

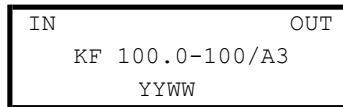
Number: 93 127  
Drawing: 71 0073

1. Electric values

ROHS-Compliant Product

1.0 Number of poles:	4
1.1 Nominal centre frequency f <sub>nom</sub> :	100 000 kHz ( fundamental )
1.2 Bandwidth between 3 dB frequencies:	>± 50,0 kHz
1.3 Ripple ( f <sub>nom</sub> ± 30,0 kHz):	< 1,0 dB
1.4 Insertion loss:	< 3,0 dB
1.5 Stop band:	f <sub>nom</sub> ± 150 kHz: ≥ 40 dB
	f <sub>nom</sub> ± 250 kHz ... ± 5 MHz: ≥ 55 dB (except spurious)
1.6 Spurious response:	≥ 20 dB
1.7 Terminating impedance:	50 Ohm // 0 pF
1.8 Maximum input power level ( working / non-damaged ):	-10 / +10 dBm
1.9 Operating temperature range:	-20°C ... + 70°C
Operable temperature range:	-20°C ... + 80°C
Storage temperature range:	-40°C ... + 90°C
1.10 Case:	KA 3 (with SMA female) 61.1 x 26.8 x 27.3 mm

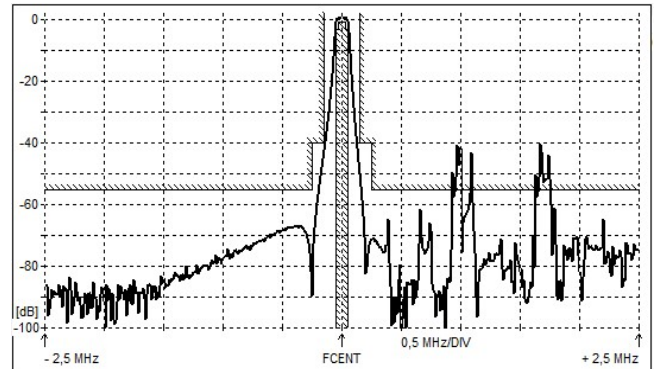
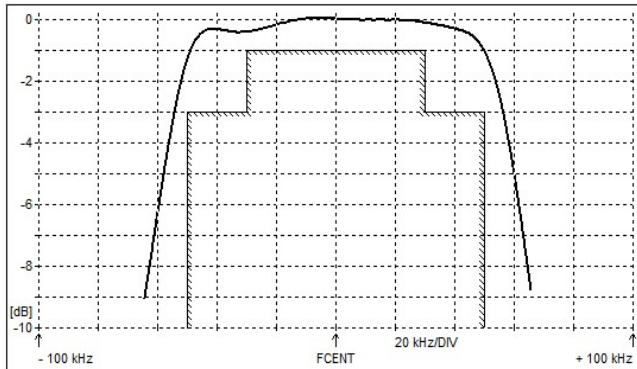
1.11 Marking on the case :



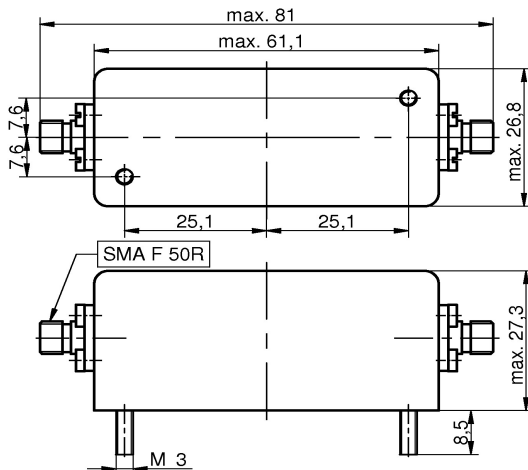
YY - year  
WW – week ( or customer's marking )

2. Characteristics

KF 100.0-100/A3

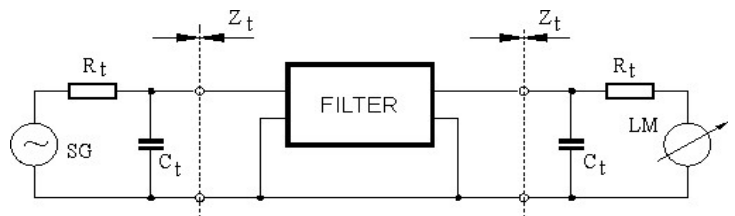


Dimensions KA3  
[mm]



Measurement Circuit

xls



edited 01.11.2023 P.Jungling