

**SPECIFICATION FOR CRYSTAL NOTCH FILTER**  
**KFS 10.0-0.2/A2** (preliminary specification)

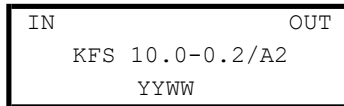
**Number: 93 275**  
**Drawing: 71 0114**

**1. Electric values**

**ROHS-Compliant Product**

- |  |  |
|--|--|
| 1.0 Number of poles:                                     | 3  |
| 1.1 Nominal centre frequency f <sub>nom</sub> :          | 10 000 kHz ( fundamental )                   |
| 1.2 Pass band1: ( B < 3dB )                              | f <sub>nom</sub> -2000 kHz ... -10 kHz       |
| Pass band2: ( B < 3dB )                                  | f <sub>nom</sub> +20 kHz ... +2500 kHz       |
| 1.3 Ripple in Pass band:                                 | < 1,0 dB (except spurious)                   |
| 1.4 Insertion loss:                                      | < 3,0 dB (typ. 1,9 dB)                       |
| 1.5 Stop band1: 10 MHz ± 0,10 kHz:                       | ≥ 60 dB                                      |
| 1.6 Terminating impedance:                               | 50 Ohm // 0 pF                               |
| 1.7 Maximum input power level ( working / non-damaged ): | 0 / +10 dBm                                  |
| 1.8 Operating temperature range:                         | -20°C ... +70°C                              |
| Storage temperature range:                               | -40°C ... +90°C                              |
| 1.9 Case:  | KA 2 (with BNC female) 61.1 x 26.8 x 27.3 mm |

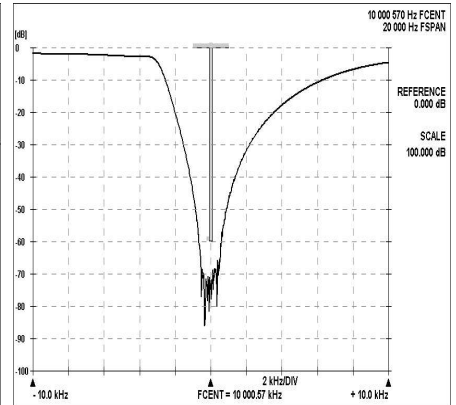
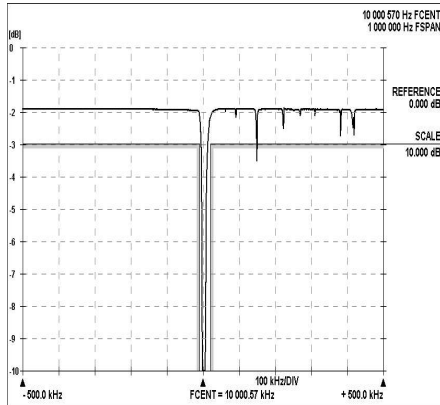
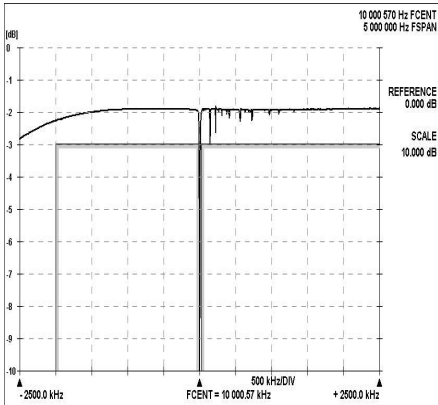
1.10 Marking on the case :



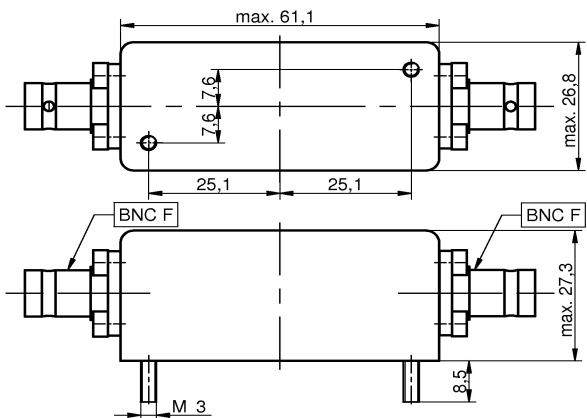
YY - year  
WW – week ( or customer's marking )

**2. Characteristics**

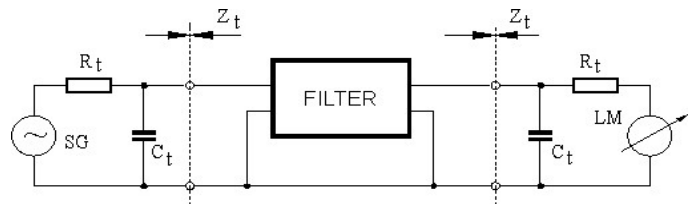
**KFS 10.0-0.2/A2**



**Dimensions KA2 [mm]**



**Measurement Circuit**



edited 11.12.2024 P.Jungling