

Front-end crystal filters

KF 1xx.xxx-24/A4

118 MHz to 142 MHz

Number: 99 015

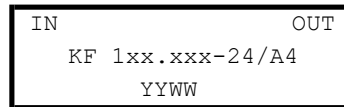
Drawing: 71 0094

1. Electric values

ROHS-Compliant Product

1.0	Number of poles:	4
1.1	Nominal centre frequency f <sub>nom</sub> :	118 000 ... 142 000 kHz ( 5 overtone )
1.2	Bandwidth between 3 dB frequencies:	>± 12,000 kHz
1.3	Ripple ( f <sub>nom</sub> ± 10,0 kHz):	< 2,0 dB
1.4	Insertion loss:	< 7,0 dB
1.5	Stop band:	f <sub>nom</sub> ± 38,0 kHz: ≥ 25 dB
		f <sub>nom</sub> ± 100 kHz ... ± 5 MHz : ≥ 60 dB
1.6	Spurious response:	≥ 25 dB
1.7	Terminating impedance:	50 Ohm // 0 pF
1.8	Maximum input power level ( working / non-damaged ):	-10 / +10 dBm
1.9	Operating temperature range:	-10°C ... + 60°C
	Operable temperature range:	-20°C ... + 80°C
	Storage temperature range:	-40°C ... + 90°C
1.10	Case:	KA 4 (with N female) 61.1 x 26.8 x 27.3 mm

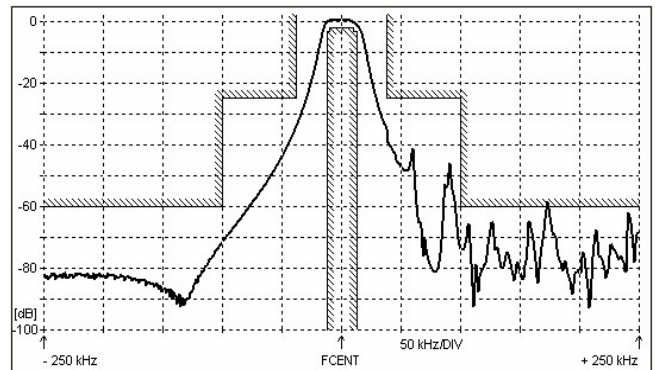
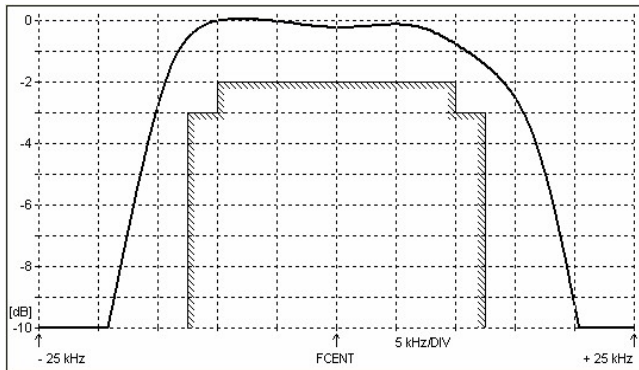
1.11 Marking on the case :



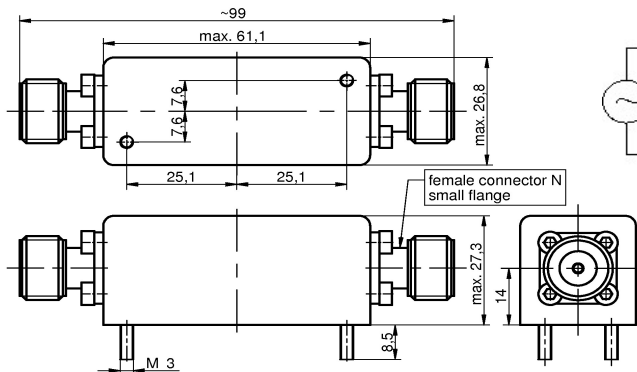
YY - year

WW – week ( or customer's marking )

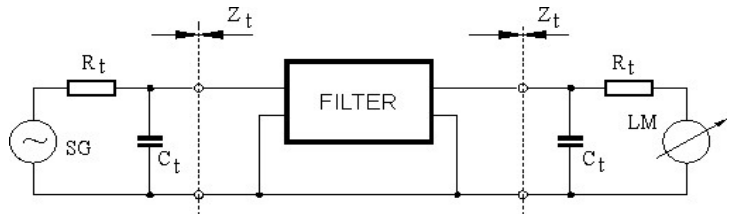
2. Characteristics



Dimensions KA4 [mm]



Measurement Circuit



edited 11.10.2022 P.Jungling