

Front-end crystal filters

KF 1xx.xxx-25/6A2

118 MHz to 150 MHz

Number: 99 019

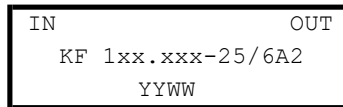
Drawing: 71 0114

1. Electric values

ROHS-Compliant Product

- 1.0 Number of poles: 6
- 1.1 Nominal centre frequency f_{nom}: 118 000 ... 150 000 kHz (5 overtone)
- 1.2 Bandwidth between 3 dB frequencies: >± 12,5 kHz
- 1.3 Ripple (f_{nom} ± 9,0 kHz): < 1,0 dB
- 1.4 Insertion loss: < 6,5 dB
- 1.5 Stop band: f_{nom} ± 40 kHz: ≥ 40 dB
f_{nom} ± 53 kHz ... ± 5 MHz : ≥ 60 dB
Ultimate attenuation: ≥ 60 dB
- 1.6 Spurious response: ≥ 30 dB
- 1.7 Terminating impedance: 50 Ohm // 0 pF
- 1.8 Maximum input power level (working / non-damaged): -5 / +5 dBm
- 1.9 Operating temperature range: -20°C ... + 70°C
Operable temperature range: -20°C ... + 80°C
Storage temperature range: -40°C ... + 90°C
- 1.10 Case: KA 2 (with BNC female) 61.1 x 26.8 x 27.3 mm

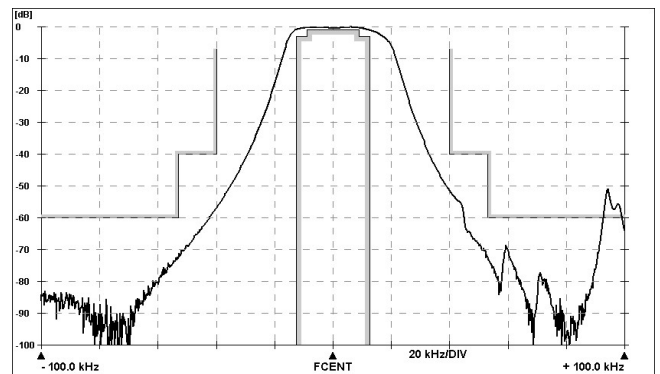
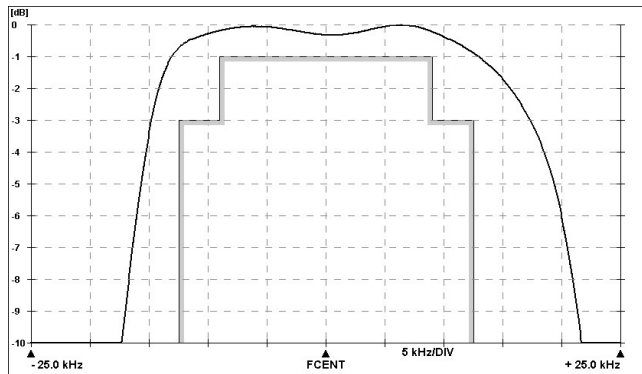
1.11 Marking on the case :



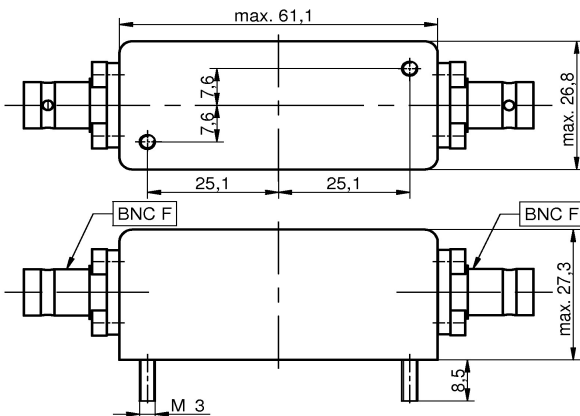
YY - year
WW – week (or customer's marking)

2. Characteristics

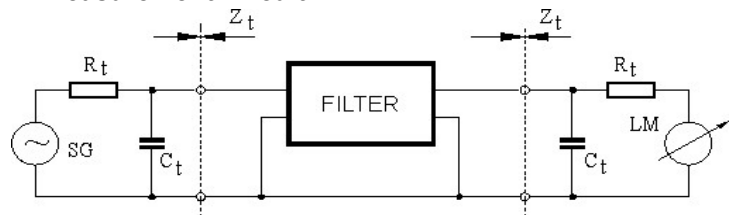
KF 1xx.xxx-25/6A2



Dimensions KA2 [mm]



Measurement Circuit



edited 05.01.2024 P.Jungling