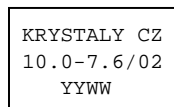


SPECIFICATION FOR CRYSTAL FILTER
MCF 10.0-7.6/02

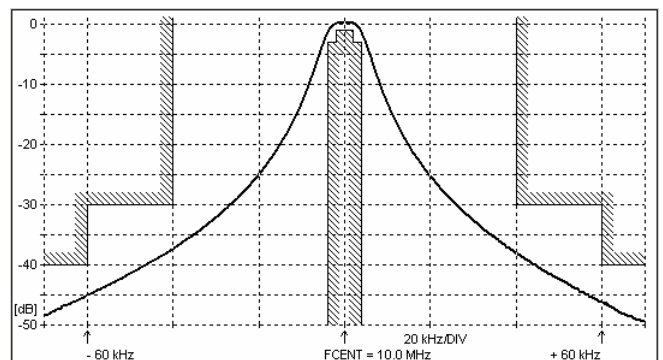
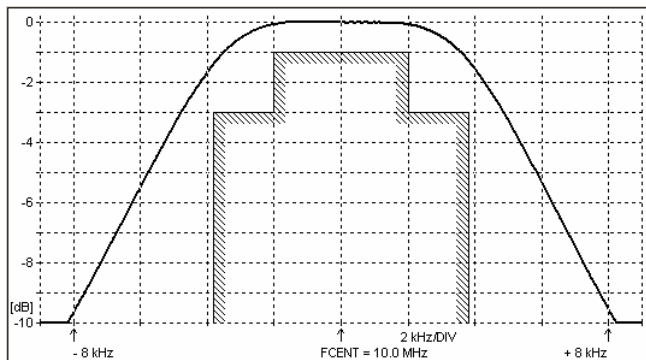
Number: 91 779
Drawing: 61 9569

1. Electric values

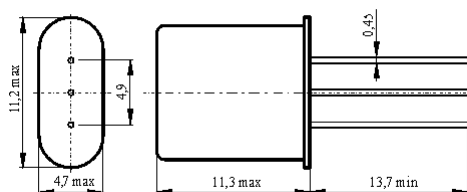
1.0 Number of poles :	2
1.1 Nominal centre frequency f_{nom} :	10.0 MHz
1.2 Bandwidth between 3 dB frequencies :	$\geq \pm 3.8$ kHz
1.3 Ripple in band $f_{nom} \pm 2.0$ kHz :	≤ 1.0 dB
1.4 Insertion loss :	≤ 1.0 dB
1.5 Stop band $f_{nom} \pm 40$ kHz :	≥ 30 dB
$f_{nom} \pm 60 \dots \pm 600$ kHz :	≥ 40 dB
1.6 Spurious :	≥ 14 dB
1.7 Terminating impedance (input and output) :	3900 Ohm // 2.0 pF
1.8 Operating temperature range :	-40°C až +85°C
1.9 Case :	HC-49U / 3pin
1.10 Marking on the case :	YY = year WW = week



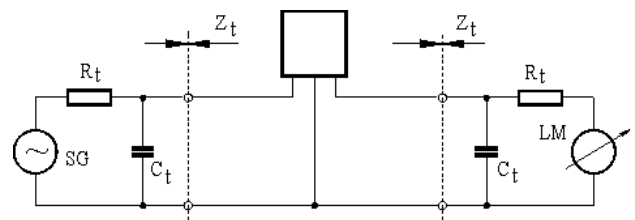
2. Characteristics MCF 10.0-7.6/02



Dimensions [mm]
Case HC-49U / 3 pin



Measurement Circuit



edited	12.08.2011	P. Seidl
--------	------------	----------