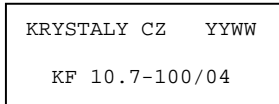


SPECIFICATION FOR CRYSTAL FILTER KF 10.7-100/04

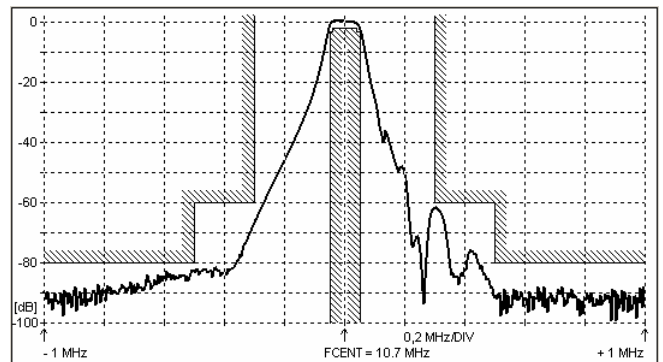
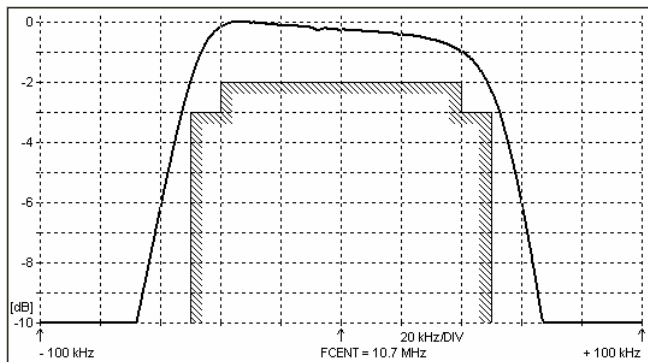
Number: 91 904
Drawing: 62 9572

1. Electric values

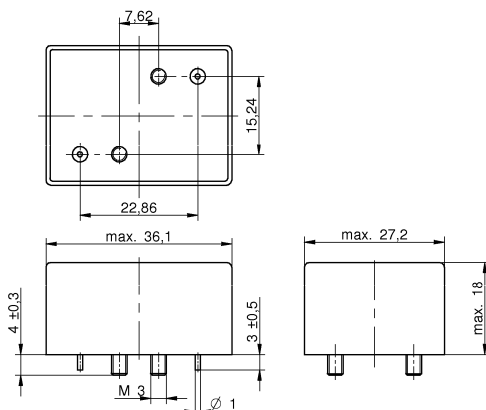
1.0 Number of poles :	4
1.1 Nominal centre frequency f_{nom} :	10.7 MHz
1.2 Centre frequency f_c :	10.7 MHz \pm 1.0 kHz
1.3 Bandwidth between 3 dB frequencies :	$\geq \pm$ 50 kHz
1.4 Ripple at $f_{nom} \pm 40.0$ kHz :	\leq 2.0 dB
1.5 Insertion loss :	\leq 4.5 dB
1.6 Stop band $f_c \pm 300$ kHz :	\geq 60 dB
$f_c \pm 500$ kHz :	\geq 80 dB
1.7 Alternate attenuation :	\geq 90 dB
1.8 Spurious responses :	\geq 50 dB
1.9 Terminating impedance (input and output) :	50 Ohm // 0 pF
1.10 Operating temperature range :	-20°C to +70°C
1.11 Case :	KF 11.2 (36.1 x 27.2 x 18.0 mm)
1.12 Marking on the case :	YY = year WW = week



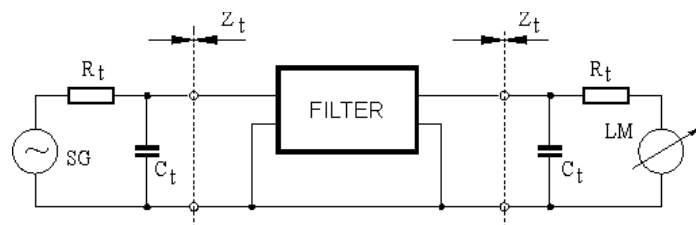
2. Characteristics KF 10.7-100/04



Dimensions [mm] Case KF-11.2



Measurement Circuit



edited	18.12.2012	P. Seidl
--------	------------	----------