



SPECIFICATION FOR CRYSTAL FILTER
MCF 21.4-12/10 (ekv. 21U12E)

Number: 92 191
Drawing: 61 9583

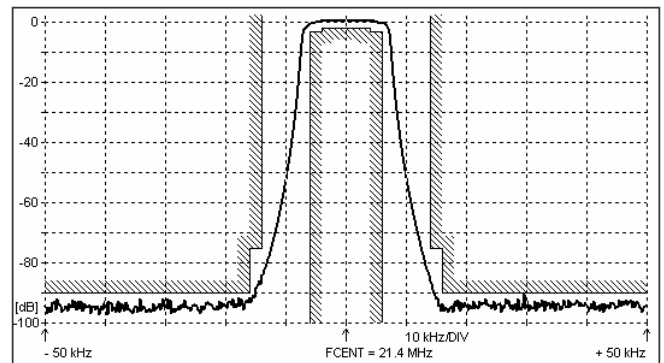
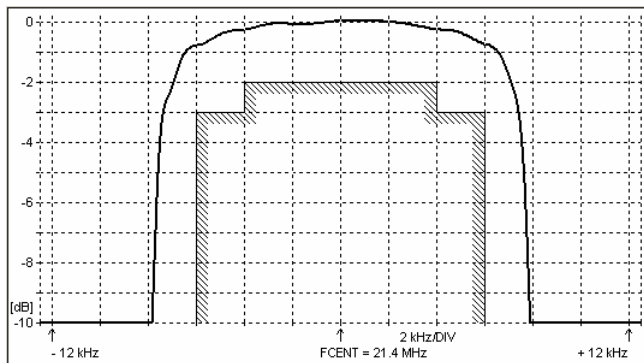
1. Electric values

- 1.0 Number of poles : 10
- 1.1 Nominal centre frequency f_{nom} : 21.4 MHz
- 1.2 Bandwidth between 3 dB frequencies : $\geq \pm 6.0$ kHz
- 1.3 Ripple at $f_{nom} \pm 4.0$ kHz : ≤ 2.0 dB
- 1.4 Insertion loss : ≤ 3.5 dB
- 1.5 Stop band: $f_{nom} \pm 14$ kHz : ≥ 75 dB
 $f_{nom} \pm 16$ kHz : ≥ 90 dB
 $f_{nom} \pm 16 \dots \pm 300$ kHz : ≥ 90 dB
- 1.6 Terminating impedance (input and output) : 1200 Ohm // 2.0 pF
- 1.7 Operating temperature range : -20°C až $+70^\circ\text{C}$
- 1.8 Case : KV 3 (14 x 8.7 x 11.5 mm)
- 1.9 Marking on the case :

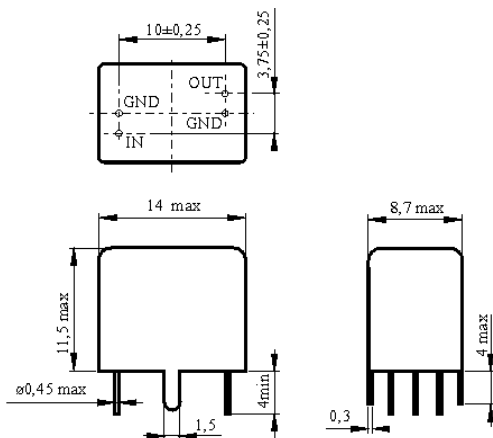
KRYSTALY CZ
YYWW
21.4-12/10

YY = year
WW = week

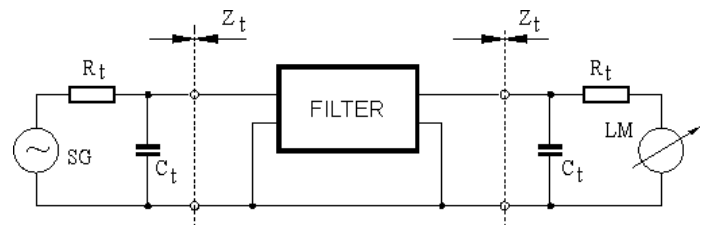
2. Characteristics MCF 21.4-12/10



Dimensions [mm]
Case KV 3



Measurement Circuit



edited 17.06.2011 P. Seidl