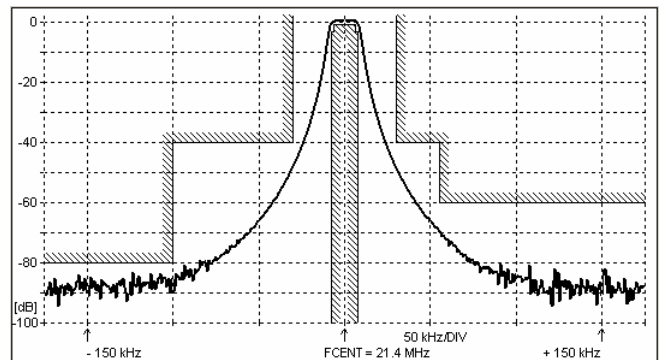
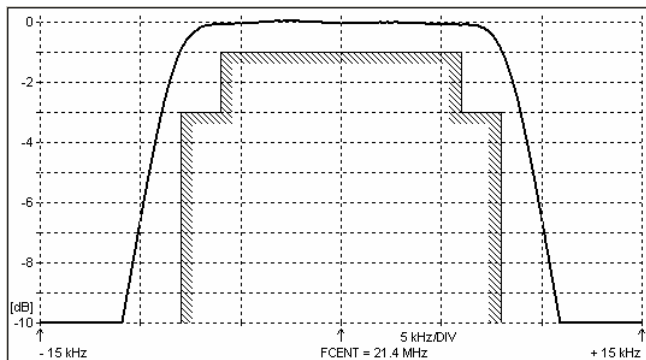
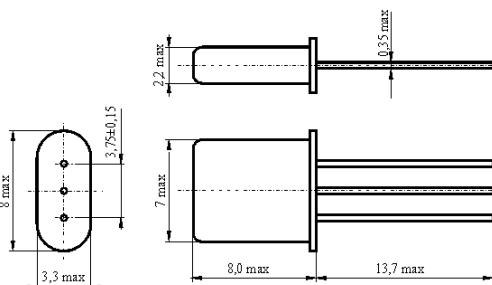
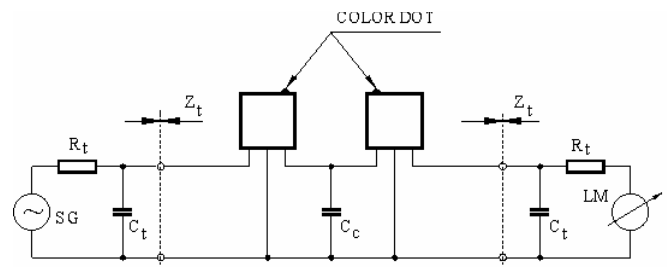
**SPECIFICATION FOR CRYSTAL FILTER
MCF 21.4-16B**Number: 91 712
Drawing: 61 9574**1. Electric values**

1.0 Number of poles :	4
1.1 Nominal centre frequency f_{nom} :	21.4 MHz
1.2 Bandwidth between 3 dB frequencies :	$\geq \pm 8.0$ kHz
1.3 Ripple at $f_{nom} \pm 6.0$ kHz :	≤ 1.0 dB
1.4 Insertion loss :	≤ 2.0 dB
1.5 Stop band: $f_{nom} \pm 30$ kHz :	≥ 40 dB
$f_{nom} + 55 \dots + 1000$ kHz :	≥ 60 dB
$f_{nom} - 100 \dots - 1000$ kHz :	≥ 80 dB
1.6 Terminating impedance (input and output) :	1400 Ohm // 2.0 pF
Coupling capacitance :	8.3 pF
1.7 Operating temperature range :	-30°C až +70°C
1.8 Case :	2 x UM-1
1.9 Marking on the case :	YY = year WW = week

KRYSTALY 21.4-16B YYWW

2. Characteristics MCF 21.4-16B**Dimensions [mm]
Case UM-1****Measurement Circuit**

edited 15.07.2011 P. Seidl