

SPECIFICATION FOR CRYSTAL FILTER MCF 21.4-40/18 (preliminary specification)

Number: 92 613
Drawing: 61 9578

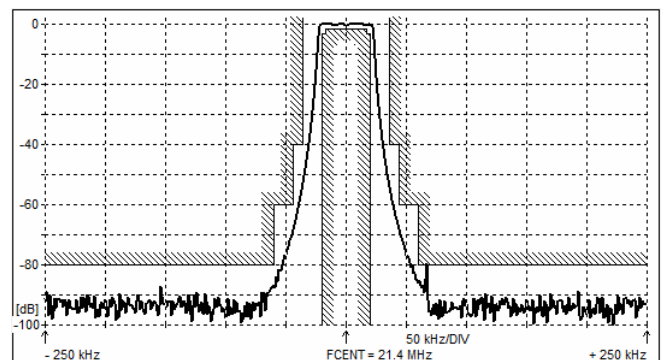
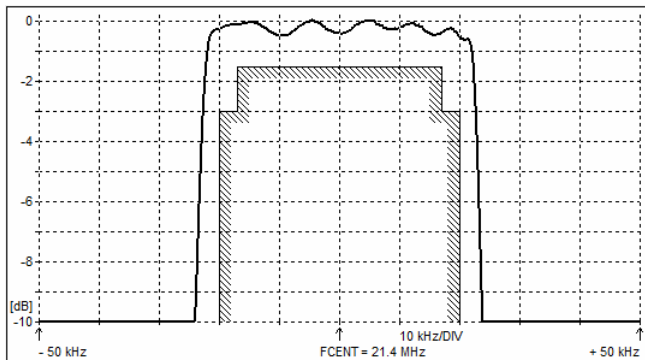
1. Electric values

- 1.0 Number of poles : 8
- 1.1 Nominal centre frequency f_{nom} : 21.4 MHz
- 1.2 Bandwidth between 3 dB frequencies : $\geq \pm 20$ kHz
- 1.3 Ripple at $f_{nom} \pm 17$ kHz : ≤ 1.5 dB
- 1.4 Insertion loss : ≤ 4.0 dB
- 1.5 Stop band $f_{nom} \pm 36$ kHz : ≥ 40 dB
- $f_{nom} \pm 44$ kHz : ≥ 60 dB
- $f_{nom} \pm 60$ kHz ± 1.0 MHz : ≥ 80 dB (except spurious)
- 1.6 Spurious responses : ≥ 60 dB
- 1.7 Terminating impedance (input and output) : 50 Ohm // 0 pF
- 1.8 Operating temperature range : -55°C to $+85^{\circ}\text{C}$
- 1.9 Case : KF 13 (25.1 x 14.1 x 10.0 mm)
- 1.10 Marking on the case :

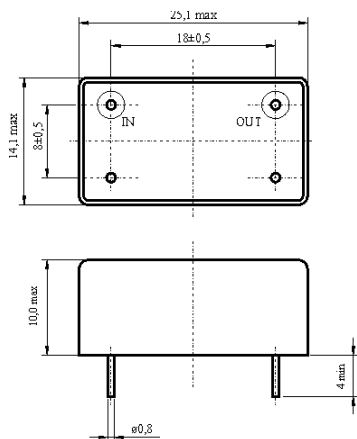
KRYSTALY HK
YYWW
21.4-40/18

YY = year
WW = week

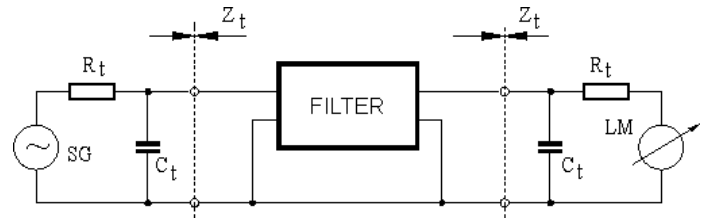
2. Characteristics MCF 21.4-40/18



Dimensions [mm] Case KF-13



Measurement Circuit



edited | 09.09.2019 | RD Krystaly