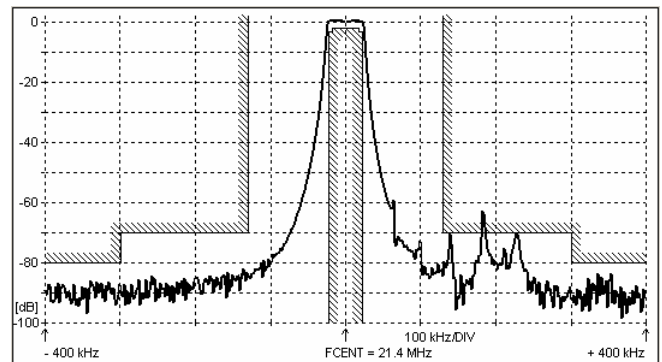
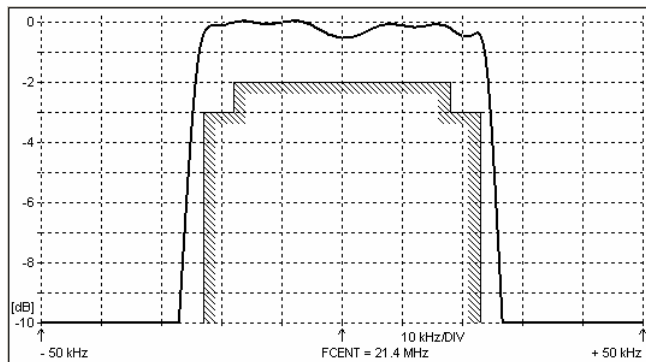
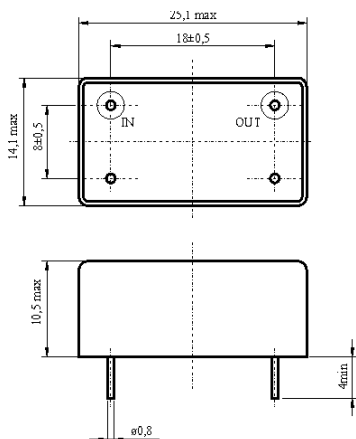
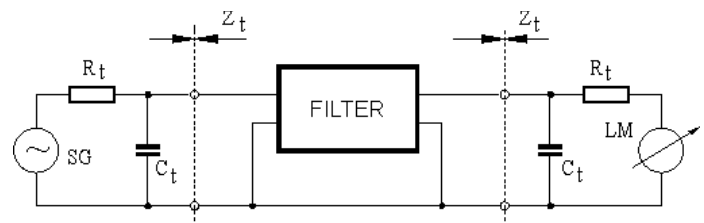


**SPECIFICATION FOR CRYSTAL FILTER
MCF 21.4-46/16**Number: 91 892
Drawing: 61 9578**1. Electric values**

1.0 Number of poles :	6
1.1 Nominal centre frequency from :	21.4 MHz
1.2 Frequency tolerance :	± 3000 Hz
1.3 Bandwidth between 3 dB frequencies :	$\geq \pm 23$ kHz
1.4 Ripple at f _{nom} ± 18.0 kHz :	≤ 2.0 dB
1.5 Insertion loss :	≤ 4.0 dB
1.6 Stop band: f _{nom} ± 120 kHz :	≥ 70 dB
1.7 Ultimate attenuation :	≥ 70 dB (except spurious)
1.8 Terminating impedance (input and output) :	50 Ohm // 0 pF
1.9 Operating temperature range :	-40°C až +85°C
1.10 Case :	KF 13 (25.1 x 14.1 x 10.5 mm)
1.11 Marking on the case :	YY = year WW = week

KRYSTALY CZ YYWW 21.4-46/16

2. Characteristics MCF 21.4-46/16**Dimensions [mm]
Case KF 13****Measurement Circuit**

edited	10.06.2011	P. Seidl
--------	------------	----------