

# SPECIFICATION FOR CRYSTAL FILTER MCF 35.25-26/11

Number: 91 993  
Drawing: 63 9568

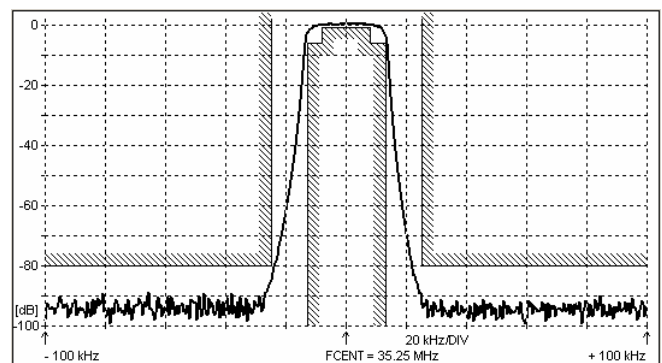
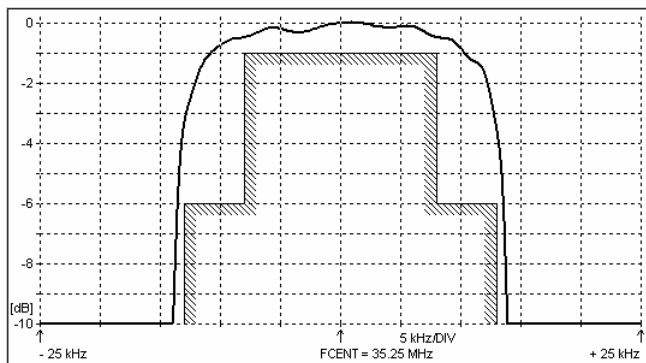
## 1. Electric values

- 1.0 Number of poles : 10
- 1.1 Nominal centre frequency  $f_{nom}$  : 35.25 MHz
- 1.2 Centre frequency  $f_c$  : 35.25 MHz  $\pm$  1.5 kHz
- 1.3 Bandwidth between 6 dB frequencies :  $\geq \pm$  13 kHz
- 1.4 Ripple at  $f_{nom} \pm 8.0$  kHz :  $\leq$  1.0 dB
- 1.5 Insertion loss :  $\leq$  5.0 dB
- 1.6 Stop band  $f_{nom} \pm 25$  kHz .....  $\pm$  5 MHz :  $\geq$  80 dB
- 1.7 Alternate attenuation :  $\geq$  80 dB
- 1.8 Terminating impedance ( input and output ) : 50 Ohm // 0 pF
- 1.9 Operating temperature range : -20°C to +70°C
- 1.10 Case : KF 17.5 SMD (40 x 21 x 8 mm)
- 1.11 Marking on the case :

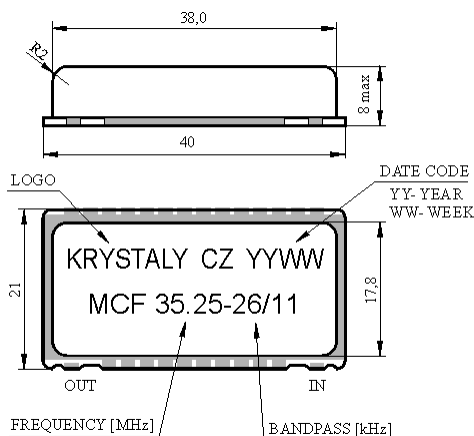
KRYSTALY CZ YYWW
MCF 35.25-26/11

YY = year  
WW = week

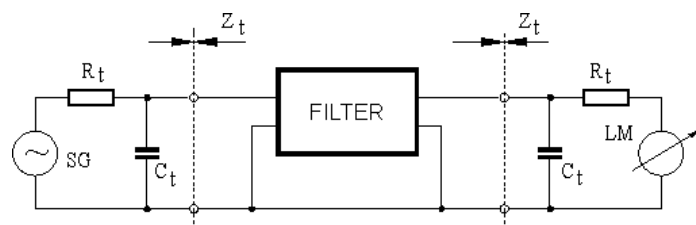
## 2. Characteristics MCF 35.25-26/11



## Dimensions [mm] Case KF-17



## Measurement Circuit



edited	31.08.2011	P. Seidl
--------	------------	----------