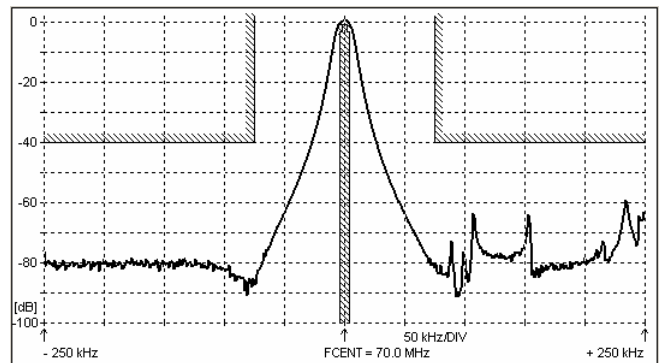
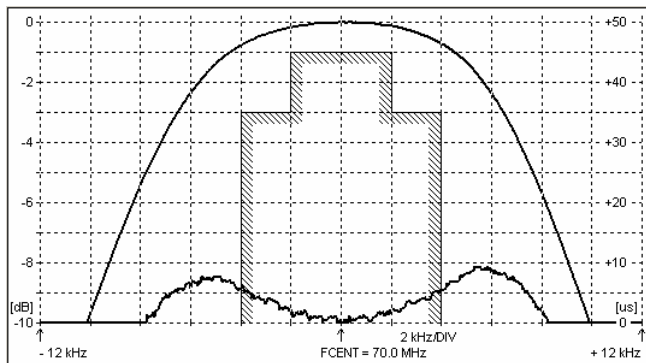
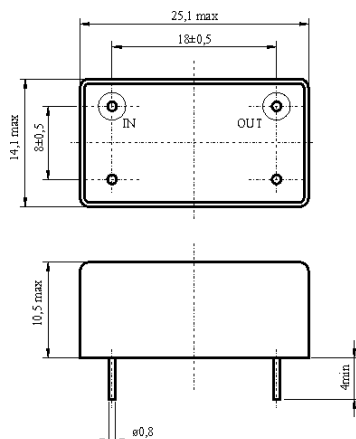
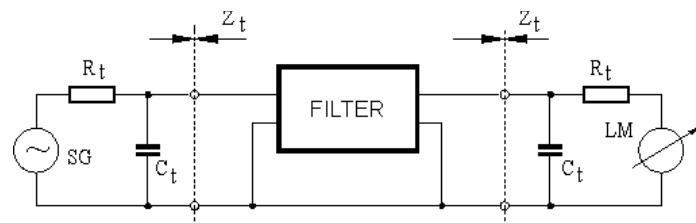
**SPECIFICATION FOR CRYSTAL FILTER**  
**MCF 70.0-08/07**Number: 91 896  
Drawing: 61 9578**1. Electric values**

1.0 Number of poles :	4 (3 rd overtone)
1.1 Nominal centre frequency $f_{nom}$ :	70.0 MHz
1.2 Bandwidth between 3 dB frequencies :	$\geq \pm 4.0$ kHz
1.3 Ripple at $f_{nom} \pm 2.0$ kHz :	$\leq 1.0$ dB
1.4 Insertion loss :	$\leq 5.0$ dB
1.5 Group delay distortion $f_{nom} \pm 4.0$ kHz :	$\leq 15\mu s$
1.6 Stop band: $f_{nom} \pm 75$ kHz :	$\geq 40$ dB
$f_{nom} \pm 455$ kHz :	$\geq 60$ dB
$f_{nom} \pm 825 \dots \pm 925$ kHz :	$\geq 70$ dB
1.7 Spurious :	$\geq 40$ dB
1.8 Terminating impedance ( input and output ) :	50 Ohm // 0 pF
1.9 Operating temperature range :	-40°C to +85°C
1.10 Case :	KF 13 (25.1 x 14.1 x 10.5 mm)
1.11 Marking on the case :	YY = year WW = week

KRYSTALY CZ YYWW

MCF 70.0-08/07

**2. Characteristics MCF 70.0-08/07****Dimensions [mm]**  
**Case KF 13****Measurement Circuit**

edited 08.09.2011 P. Seidl