

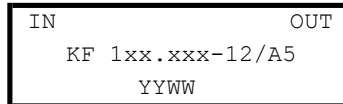
Front-end crystal filters
KF 118 MHz to 166 MHz-12/A5

Number: 92 004
Drawing: 71 0159

1. Electric values

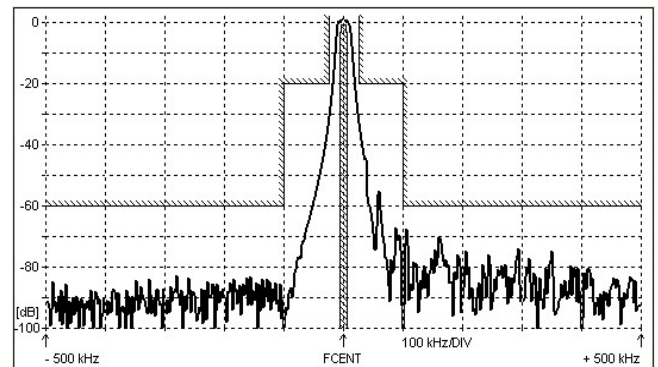
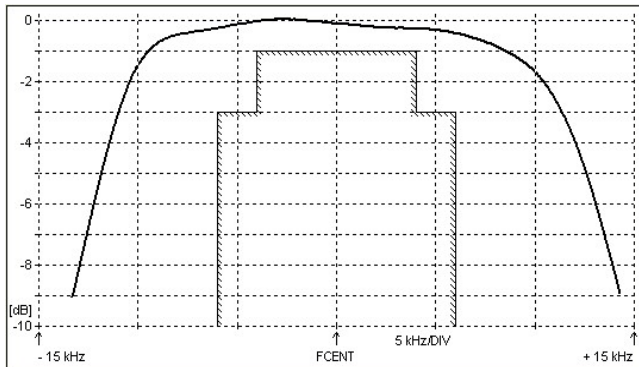
- 1.0 Number of poles: 4
- 1.1 Nominal centre frequency f_{nom}: 118 000 ... 166 000 kHz (5 overtone)
- 1.2 Bandwidth between 3 dB frequencies: >± 6,000 kHz
- 1.3 Ripple (f_{nom} ± 4,0 kHz): < 1,0 dB
- 1.4 Insertion loss: < 6,0 dB
- 1.5 Stop band:
 - f_{nom} ± 25,0 kHz: ≥ 20 dB
 - f_{nom} ± 100 kHz ... ± 5 MHz: ≥ 60 dB
- 1.6 Spurious response: ≥ 20 dB
- 1.7 Terminating impedance: 50 Ohm // 0 pF
- 1.8 Maximum input power level (working / non-damaged): -10 / +10 dBm
- 1.9 Operating temperature range: -10°C ... + 60°C
Operable temperature range: -20°C ... + 80°C
Storage temperature range: -40°C ... + 90°C
- 1.10 Case: KF 5 (38.4 x 18.2 x 16.5 mm)

1.11 Marking on the case :

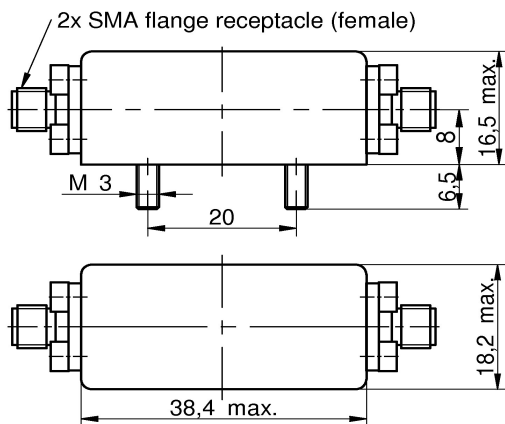


YY - year
WW – week (or customer's marking)

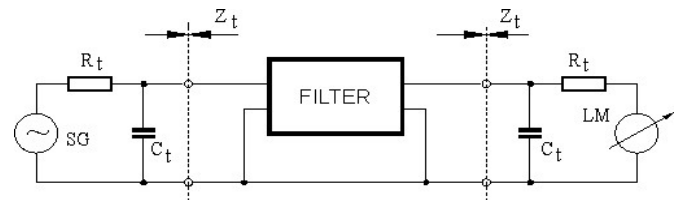
2. Characteristics



Dimensions KA5
[mm]



Measurement Circuit



edited | 04.08.2018 | P.Jungling