

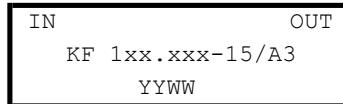
**Front-end crystal filters**  
**KF 140 MHz to 190 MHz-15/A3**

**Number: 99 006**  
**Drawing: 71 0073**

**1. Electric values**

- 1.0 Number of poles: 4
- 1.1 Nominal centre frequency f<sub>nom</sub>: 140 000 ... 190 000 kHz ( 5 overtone )
- 1.2 Bandwidth between 3 dB frequencies: >± 7,500 kHz
- 1.3 Ripple ( f<sub>nom</sub> ± 6,0 kHz): < 2,0 dB
- 1.4 Insertion loss: < 7,0 dB
- 1.5 Stop band:
  - from ±: 40,0 kHz: ≥ 40 dB
  - from ±: 100 kHz ... ± 5 MHz: ≥ 60 dB
- 1.6 Spurious response: ≥ 25 dB
- 1.7 Terminating impedance: 50 Ohm // 0 pF
- 1.8 Maximum input power level ( working / non-damaged ): -10 / +10 dBm
- 1.9 Operating temperature range: 0°C ... + 60°C  
Operable temperature range: -20°C ... + 80°C  
Storage temperature range: -40°C ... + 90°C
- 1.10 Case: KA 3 (with SMA female) 61.1 x 26.8 x 27.3 mm

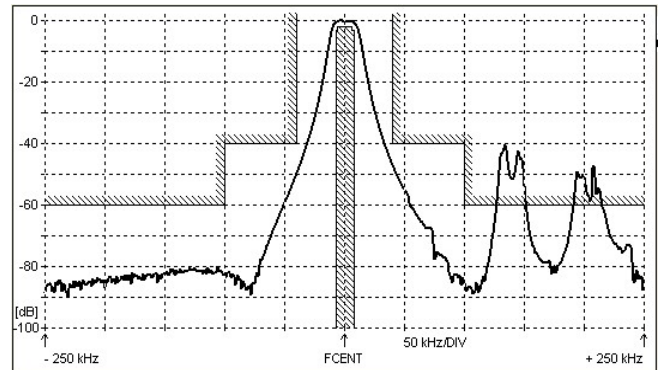
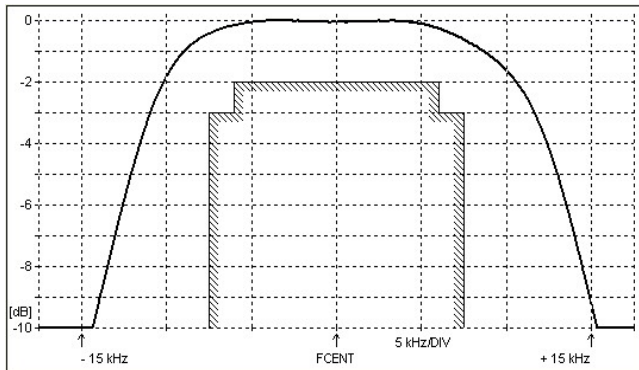
1.11 Marking on the case :



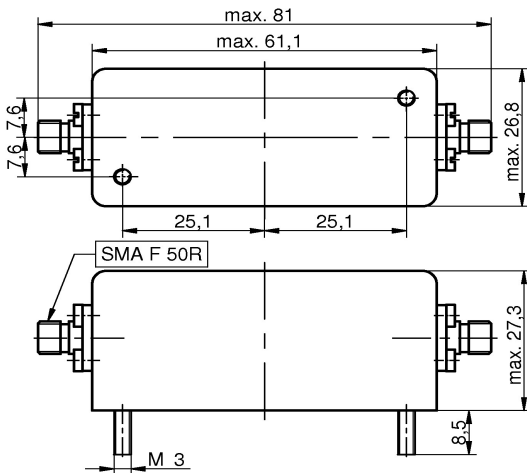
YY - year  
WW – week ( or customer's marking )

**2. Characteristics**

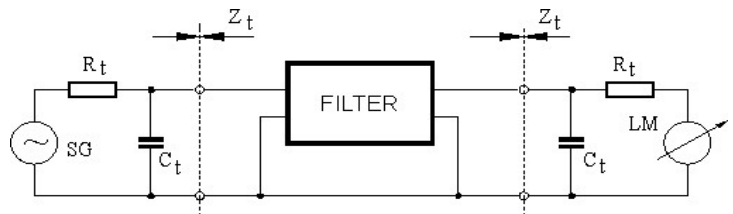
**KF 140 MHz to 190 MHz-15/A3**



**Dimensions KA3**  
**[mm]**



**Measurement Circuit**



edited 16.03.2018 P.Jungling