

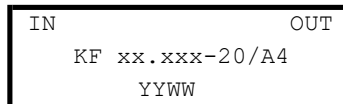
Front-end crystal filters
KF 60 MHz to 99 MHz-20/A4

Number: 99 013
Drawing: 71 0094

1. Electric values

- 1.0 Number of poles: 4
- 1.1 Nominal centre frequency f_{nom}: 60 000 ... 99 000 kHz (3 overtone)
- 1.2 Bandwidth between 3 dB frequencies: >± 10,0 kHz
- 1.3 Ripple (f_{nom} ± 8,0 kHz): < 2,0 dB
- 1.4 Insertion loss: < 6,0 dB
- 1.5 Stop band:
 - f_{nom} ± 40 kHz: ≥ 40 dB
 - f_{nom} ± 100 kHz ... ± 5 MHz : ≥ 50 dB
- 1.6 Spurious response: ≥ 35 dB
- 1.7 Terminating impedance: 50 Ohm // 0 pF
- 1.8 Maximum input power level (working / non-damaged): -5 / +10 dBm
- 1.9 Operating temperature range: -20°C ... + 70°C
 Operable temperature range: -20°C ... + 80°C
 Storage temperature range: -40°C ... + 90°C
- 1.10 Case: KA 4 (with N female) 61.1 x 26.8 x 27.3 mm

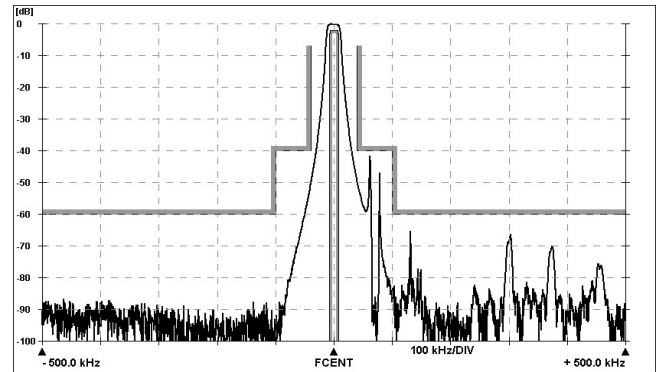
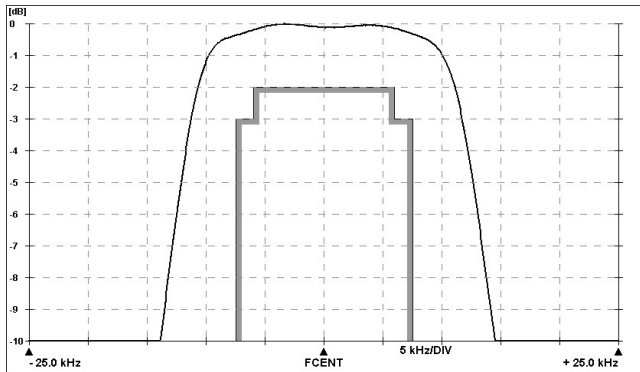
1.11 Marking on the case :



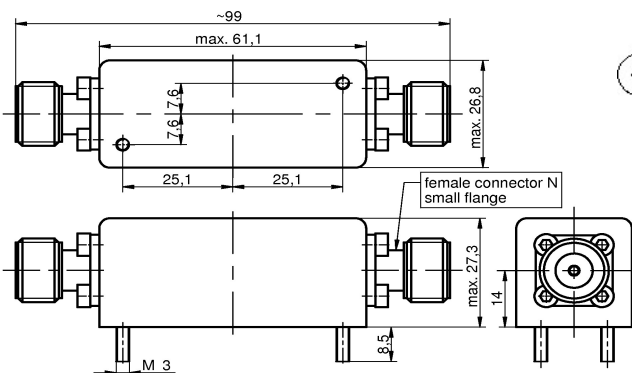
YY - year
WW – week (or customer's marking)

2. Characteristics

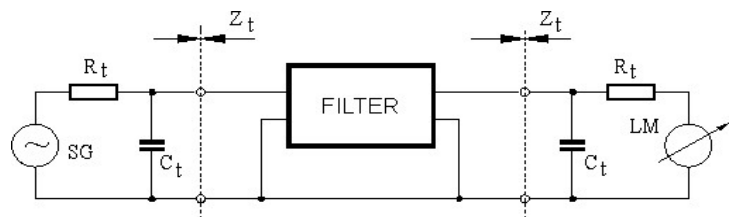
KF 60 MHz to 99 MHz-20/A4



Dimensions KA4
[mm]



Measurement Circuit



edited 24.03.2021 P.Jungling