

**SPECIFICATION FOR CRYSTAL FILTER**  
**KF 243.000-15/A4**

**Number: 93 167**  
**Drawing: 71 0094**

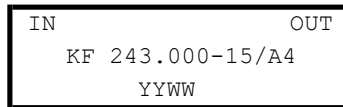
**1. Electric values**

**ROHS-Compliant Product**

1.0 Number of poles:	4
1.1 Nominal centre frequency f <sub>nom</sub> :	243 000,0 kHz ( 7 OT )
1.2 Bandwidth between 3 dB frequencies:	>± 7,5 kHz
1.3 Ripple ( f <sub>nom</sub> ± 6,0 kHz):	< 2,0 dB
1.4 Insertion loss:	< 8,0 dB
1.5 Stop band:	f <sub>nom</sub> ± 40 kHz: ≥ 40 dB
	f <sub>nom</sub> - 100 kHz ... - 5 MHz : ≥ 50 dB (except spurious )
	f <sub>nom</sub> + 1500 kHz ... + 5 MHz : ≥ 50 dB (except spurious )
Ultimate attenuation:	≥ 50 dB
1.7 Terminating impedance:	50 Ohm // 0 pF
1.8 Maximum input power level ( working / non-damaged ):	-10 / +5 dBm
1.9 Operating temperature range:	-20°C ... + 70°C
Operable temperature range:	-20°C ... + 80°C
Storage temperature range:	-40°C ... + 90°C

1.10 Case: KA 4 (with N female) 61.1 x 26.8 x 27.3 mm

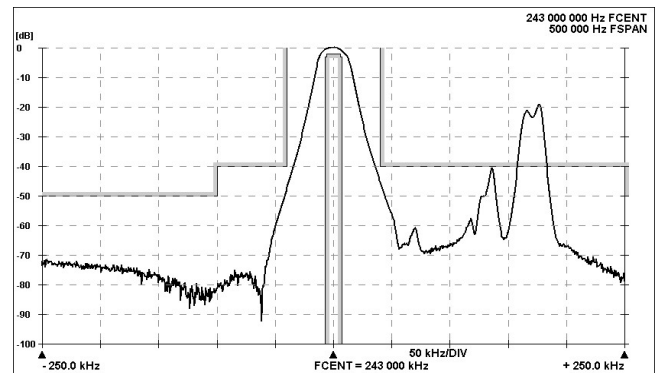
1.11 Marking on the case :



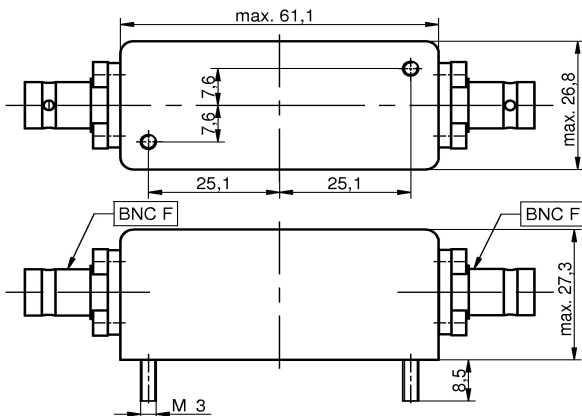
YY - year  
WW – week ( or customer's marking )

**2. Characteristics**

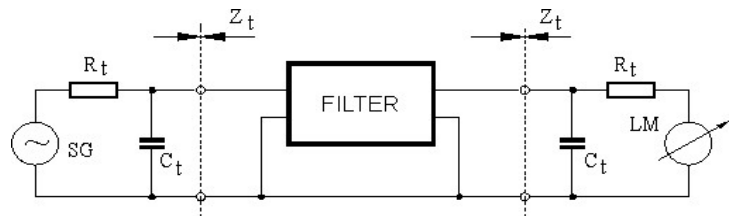
**KF 243.000-15/A4**



**Dimensions KA4 [mm]**



**Measurement Circuit**



edited | 02.02.2024 | P.Jungling